



# 2014 *Annual Report*

The mission of the Dearborn County Solid Waste Management District is to foster a sense of responsibility and inspire action by Dearborn County residents to reduce solid waste by creating an awareness and commitment to reduction, reuse and recycling programs.

10700 Prospect Lane, Aurora, IN 47001  
812-926-9963 — [DearbornCountyRecycles.com](http://DearbornCountyRecycles.com)



# Contents

Staff 4-5

General Recycling  
& Nuisance Wastes 6-7

Curbside Recycling 8

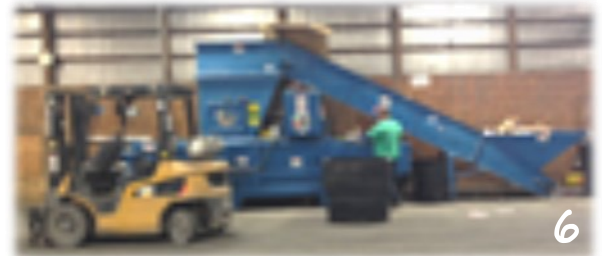
Document Shredding 8

Household  
Hazardous Waste 9

Tree Recycling 9



4



6



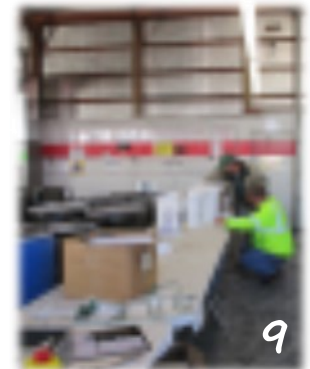
8



14



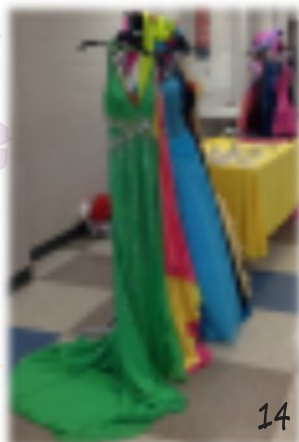
10



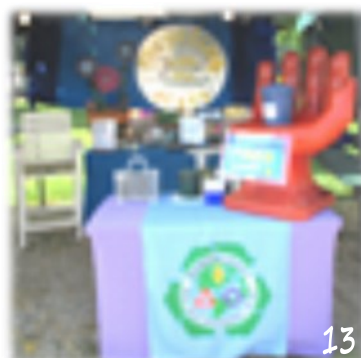
9



15



14



13

Commercial Recycling 10

School Recycling 11

Education & Outreach 12-13

Creation Station 14

Reused, Repurposed &  
Recycled Content 15

Financial Summary 16

Working Together 17



# DCSWMD Staff

Coming together is a beginning;  
keeping together is progress; working  
together is success. – Henry Ford



BJ Ault



Ken Bevis



Elmer Campbell



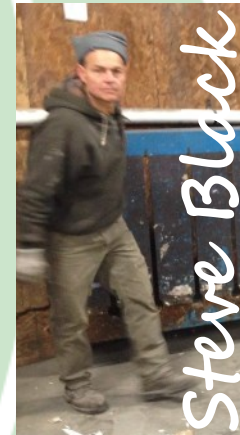
Phil Darling



Jim Johnston



Randy Disch



Steve Black



Joe Dittmer



Betty O'Banion



Cameron Metcalfe



Molly Resendes



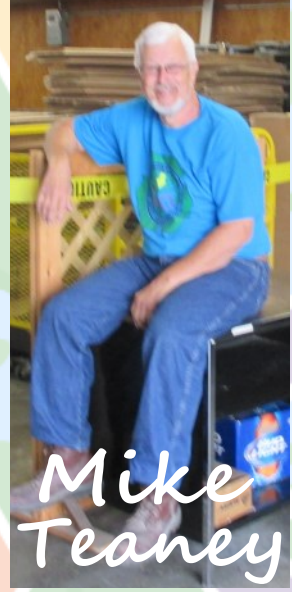
Ray Hopping



Lorel O'Banion



Mike Teaney



Mindy Smith



Dale Workman



# General Recycling & Nuisance Waste

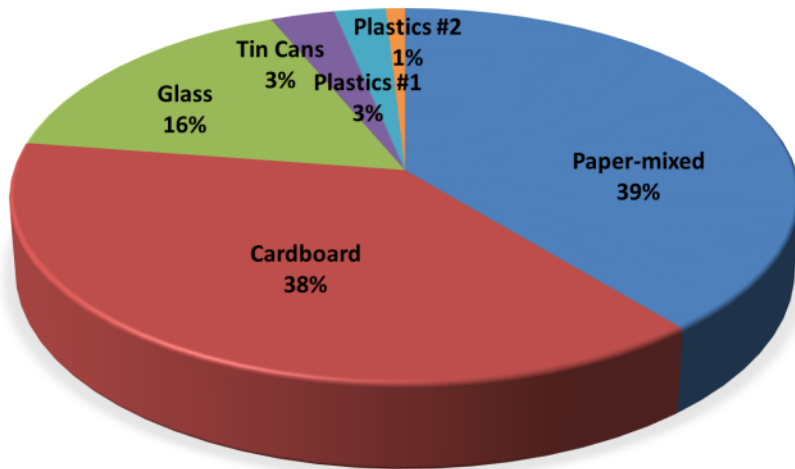
The amount of materials processed at the Recycling Center was up 24.5% in 2014.

General recyclables jumped from 1,142 tons to 1,387 tons. Nuisance wastes increased from 166.5 tons to 243.7 tons.

Several milestones were reached last year. Over 10,000 tons of recyclables have been processed at the Recycling Center since it opened in 2004. This includes all recyclables collected in the drive-thru, at the drop-off locations, and through the District's commercial recycling program. The breakdown of recyclables is shown below.



**Breakdown of General Recyclables**



Cardboard numbers increased due to the City of Lawrenceburg bringing the cardboard they collect from local businesses twice a week (pictured above). Mid-year, the District's commercial recycling program gained two new customers. By the end of the year, these two customers alone added nearly 100,000 pounds of cardboard.

All total, over 1 million pounds of cardboard were sold by the District during 2014.

Mixed paper (pictured on right) is another recyclable that exceeded the 1 million pounds sold this year. Again, the biggest volumes came from commercial customers; over 100,000 pounds were collected from the top three generators throughout the year. In addition, over 65,000 pounds of hard cover books were collected to be recycled. Books are separated. Paperback books are included in the mixed paper sort. Hardcover books are shipped separately.





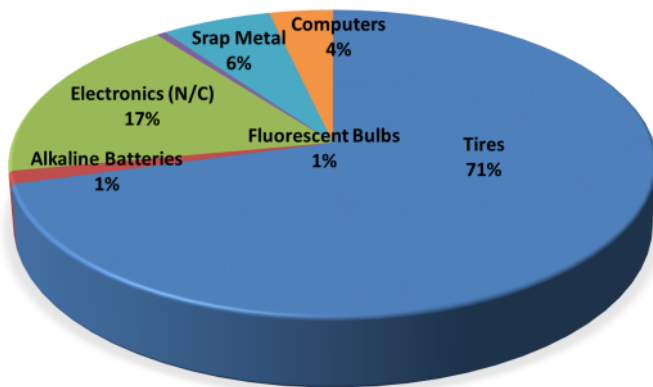


In-house changes added to the market value of some recyclables, particularly plastics. PET #1 bottles have been separated from HDPE #2 for some time at the Recycling Center. This year, the market value of #2 natural plastic increased exponentially, making it economically feasible to sort the natural from the colored. At the end of the year, the District had collected 133,000 pounds of plastic. For reference, it takes 9 one-gallon milk jugs or two-liter soda bottles to make one pound; it takes five times that many 12 ounce soda bottles or 16 ounce water bottles to

make one pound. In the photo seen here, Joe, Elmer and Ken secure wires around a bale of #1 plastic before removing it from the vertical baler.

The chart below shows the breakdown of nuisance wastes, 71% of which was tires. The District received 2,748 tires with a weight of 314,260 pounds, nearly three times the weight collected in 2013. The majority of the tires were received between April 1<sup>st</sup> and June 30<sup>th</sup>. Even though the District implemented a minimal fee for each tire brought to the Recycling beginning July 1<sup>st</sup>, monthly collections averaged the same.

## Breakdown of Nuisance Wastes



Other nuisance waste includes alkaline batteries, scrap metal, copiers, computers, other electronics, other electrical items, and battery powered items. These wastes are classified as such because if disposed of improperly they can do harm to the environment. The District offers weekly collection of nuisance wastes for convenience. These specific wastes are then channeled into environmentally sound recycling programs.

## Message Boards

Three of the busiest drop-off locations, Greendale, Lawrenceburg, and New Alsace, have a message board. Postings of general information, such as Household Hazardous Waste events and Creation Station dates, are changed quarterly. Brochures on each of the District's services are available to the public at Lawrenceburg and New Alsace. Watch these boards for information on special events, such as the annual Customer Appreciation Day.



# Curbside Recycling



When the City of Aurora rebid their trash hauling, the District was approached about a joint effort to increase recycling participation. The City applied for and received a grant from the Rising Sun Regional Foundation to implement a voluntary city-wide curbside recycling program.

Included in the grant were five hundred 18 gallon recycling bins to be provided to city residents signing up for the program and a recycling trailer to enable the Streets Department to pick up the recyclables curbside. The District is to receive all recyclables collected.

Bins and the recycling trailer arrived the beginning of December and the curbside collection kicked off with nearly 100 residents participating. The City and the District expect participation to greatly increase in the coming months.

The City of Lawrenceburg has also purchased a recycling trailer. When the curbside collection is implemented, the District is to be the recipient of all recyclables collected.

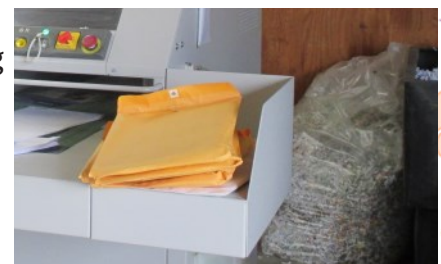


## Document Shredding

On-site document shredding is a fairly new service offered by the District, free for Dearborn County residents. A minimal fee for businesses was implemented July 1<sup>st</sup>. Shredding has proven to be a popular service with 131 participating in 2014. That was an increase of 53% over 2013 participants.



Documents containing personal information can be shredded, just call ahead to be sure staff is available to do the shredding. Pieces of plastic and metal clips must be removed before arriving at the Recycling Center. Staff member, Ray Hopping is shown feeding documents into the cross-cut shredder.





# Household Hazardous Waste



Household hazardous wastes, otherwise known as HHW, are products intended for home use that contain corrosive, toxic, ignitable, or reactive ingredients. Common examples are household cleaners, oil-based paints, automotive care products, and chemicals for lawn, garden or pool use. These products pose a threat to human health and the environment if disposed of improperly.

Collection events were held in May, July and September, 2014, a change from the eight events held during previous years. HHW is also accepted by appointment. Operations Manager Lorel O'Banion oversees the HHW program. He is seen here with an employee of

Environmental Enterprises, the District's current HHW vendor. The volume of HHW collected by the District decreased from 12.6 tons in 2013 to 11.3 tons in 2014, a decrease of 11%. The number of HHW customers decreased 4%, from 235 in 2013 to 225 in 2014. Costs also decreased from \$11,654 to \$10,579.

The costs are related directly to the types of material collected. Of the 22,675 pounds of HHW collected, there were 1,148 pounds of flammable liquids and 812 pounds of pesticides. Over 1,900 pounds of anti-freeze were collected and over 2,500 pounds of products containing mercury, mostly fluorescent bulbs. Oil-based paints and paint products also totaled over 2,000 pounds.



## Tree Recycling

Another seasonal service offered by the District is the tree recycling program. The City of Lawrenceburg once again partnered with the District to provide County residents the opportunity to recycle their live Christmas trees. Rollouts were available at the Recycling Center



and the City Garage. Though participation was down quite a bit from 2013, those trees dropped off were shredded into mulch, which will be used in the City's landscaping projects. Recycling live trees ensures that these natural resources are not wasted in landfills.



# Commercial Recycling



Recycling is not limited to household participation. The District realizes that schools and businesses can benefit from its recycling services too. Commercial recycling is important overall because of the volume of total solid waste generated by businesses.

Businesses, large and small, recycle for many reasons. It reduces disposal costs. To recycle is to act in a socially responsible manner. It improves public image and employee morale.



Participating in the District's commercial recycling program is good for your business, the District, and the planet.

The District realizes that no two businesses are alike. Upon request, Commercial Coordinator Betty O'Banion accesses the waste stream and then tailors a recycling program to meet the needs of that business. Pickups are scheduled according to volume. Commercial program driver Randy Disch is pictured unloading the trailer after a morning route.



Free pickup service and support was offered to 163 local businesses in 2014. Together 658 tons of materials were collected thru the commercial program. A variety of businesses participate, from local government units to public libraries, from restaurants and drinking establishments to retail stores and gas stations.



## 2013 REward Most Improved Commercial Recycling Program

Comb's Pizza, on Second Street in Aurora, earned the District's 2013 REward for Most Improved Commercial Recycling Program. Pictured receiving the REward are owner April Combs' husband Jesse and son Clayton. Comb's Pizza recycles mixed paper, plastic bottles and jugs, tin cans and cardboard with the District. A total of 3,338 pounds of recycling materials was collected in 2012. The following year, 7,494 pounds were collected, an increase of 124.5%.

The REward is a one-of-a-kind piece, hand-crafted of recycled glass. Its triangular shape and green color is representative of the recycling symbol and, as such, is a fitting gift to recognize this outstanding achievement.





# School Recycling

A school recycling program can have a huge impact; in fact, it may be the most important place to implement recycling. Much of the waste generated in the school is recyclable. Recycling the cardboard, mixed paper, and plastic bottles is cheaper than sending it to the landfill.

Students learn by example and action. Children are easier to teach and, once the message is learned, they take it home to share. If taught young, students will have a greater understanding of the need to recycle; it will become second nature to them, leading to a greener future.

Setting up a school recycling program can be challenging, as it involves everyone. It can be fun when used as a hands-on method to help students and staff learn the mechanics of recycling and reiterates its importance.

Over 238,319 pounds of recyclables were collected through the school recycling program during the calendar year 2014. The District also assists schools by providing extra containers for special events. Roll-outs provided for a recent “locker clean-out” at Lawrenceburg High School captured 2,000 pounds of mixed paper. In addition, the District accepts hard cover books. Over 44,000 pounds of books were recycled in 2014, the majority of which were generated by the schools.

## 2013 REward Most Improved School Recycling Program

The 2013 REward for the Most Improved School Recycling program went to the Sunman-Dearborn Intermediate School. School Recycling Program Coordinator Betty O'Banion and District Educator Molly Resendes presented the REward to Nancy Lillie, 5<sup>th</sup> Grade Science teacher and Principal Christina Vennemeier. S-DIS collected 6,296 pounds of recyclables in 2012 and 15,025 pounds in 2013, an increase of over 240%. Thanks to Mrs. Lillie and all others responsible for this increase.

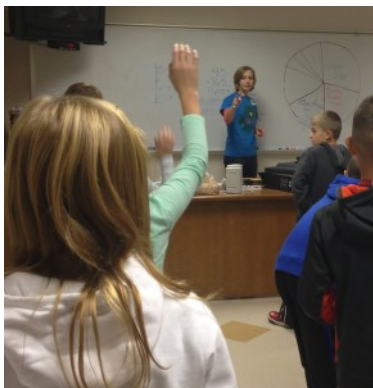


## 2013 REward Most Recycling Per Capita School Recycling Program



St. Mary's School in Aurora earned the traveling REward for Most Recycling per Capita. The school collected nearly 7,800 pounds of recycling during the calendar year. That averaged over 59 pounds per student. While recycling involves everyone in the school, these 8<sup>th</sup> grade students at St. Mary's are responsible for emptying the classroom containers into roll-outs for pick-up by District staff. Congratulations, St. Mary's on a job well done!

# Education & Outreach



Free educational programs are available for groups of any size or age. District Educator Molly Resendes offers a variety of programs that support the District's mission and stress the importance of reducing, reusing, and recycling.

2014 program attendees included 4,644 students and 2,125 adults for a total of 6,769. Nine pre-K sessions were given, 119 in the classroom, 22 school-age non-classroom, 18 adult, and 17 community for a total of 185 sessions. Teachers in all three school corporations take advantage of District offered programs. The

most requests come from first, third and fifth grade teachers. Third grade exposure is the highest because the District participates in Ag Days, a county-wide program sponsored by Farm Bureau and the Extension Service and open to all third graders. Pictured at right are third grade students participating in the Recycling Challenge.



Other topics vary depending on grade level. K-3 topics range from the 3Rs and composting to litterbugs and water pollutants. Students in grades 2-5 can learn more about renewable and nonrenewal natural resources, while grades 3-4 sort wastes into four categories in "What A Mess!" Edible Landfill remains the most popular program and works well at fifth and sixth grade levels. EnviroJeopardy and EnviroSurvivor are gaining popularity with grades 6-12.



Adult programs are tailored to meet the needs of each audience. Basic offerings include Compost 101 and Green \$hopping. In 2014 Holiday GREENery, a program that shares tips for waste reduction during the holiday season, was added to available adult offerings. It was presented to adults at local libraries.

Facility tours are available to all ages. Groups can follow recyclables from collection through the processing and ready to ship. A tour group of Boy Scouts are pictured here as they try out the floor scale.







As Educator, Molly spearheads many outreach efforts. During 2014 she maintained the District's presence at outreach events, such as the local Farmer's Markets, Moores Hill Heritage Festival and, assisted by Advisory Committee member Patty Bourquein, at the Bright Festival. Two of the larger events in 2014 were the District's Customer Appreciation Day and the Dearborn County 4-H and Community Fair.



Over 165 people took advantage of the beautiful weather to attend the Annual Customer Appreciation Day held on May 10, 2014. Staff members were available as visitors took self-guided tours. Administrative Assistant Mindy Smith greeted visitors to the WeCycle Shop, and Mike Teaney manned the document shredder. Cameron Metcalfe helped with the CFL exchange in the drive-thru. Dale Workman answered questions about the drop-off locations. Other services highlighted were the commercial program, HHW collection, and Creation Station, including ReProm and Costume Swap. Patty Bourquein led a reuse craft and Steve Lillie spoke to visitors regarding the Green Garden.

"Recycling with the Stars" was the theme for the District's booth at the 2014 4-H and Community Fair. Drawn in by a shiny disco ball, 850 fairgoers entered a drawing for many prizes, including dancing-shoe planters and a hand chair. The booth included a recycling trivia game. A correct answer earned a recycled-content pencil or recycling button.



The R.S.V.P. Halloween Fest is another annual event that is well-attended. It is held at the Lawrenceburg Firehouse. In 2014, there were 383 children and adults who made the reuse craft, which was a Trick-or-Treat bag. Molly was assisted by volunteer, Stephanie Baer.

## New in 2014

New events were successfully added, such as Lawrenceburg's Main Street First Friday event. The picture below left is of two participants in a program at the Moores Hill Senior Center in November. Below right is a photo



from the Homemakers Regional Annual Holiday program, at which Molly presented her Holiday GREENery program to 39 attendees. Also new was the District's participation in a September Farm Bureau event which saw 48 incandescent bulbs exchanged for CFLs.



# Creation Station

Supplies are available to classroom teachers and non-profit educators through the District's principal reuse program, Creation Station. Two reuse programs, ReProm and Costume Swap, are open to the public seasonally.



The District assists educators by soliciting donations from local businesses or individuals.

Reuse Coordinator Betty O'Banion gathers and displays these donations in Creation

Station, which is open every other weekend. She may have samples made or can offer educators ideas to use available materials for classroom or other learning environments. Educators must prove eligibility to

participate in this program. Creation Station helped 429 educators in 2014 by providing 9,063 pounds of free supplies. This was a 19% and 17% increase respectively. As explained by frequent Creation Station customer, Tiffany Hensen of The Waters in Dillsboro, "I come to Creation Station to get supplies so our patients can do the craft activities that they enjoy. It is a great resource!" Pictured above are regular customers, Lauren Dotzauer and Holly Snelling from Youthland Academy (left) and Nina Litchfield from Aurora Elementary School (right).



**ReProm,** the newest reuse program, offers new or once-worn formal or semi-formal dresses for swap. Some may need pressing or a small repair; all are ready to become someone's "dream" dress. Among the selection of dresses were matching shawls, gloves and even a few pairs of shoes. A limited selection of perfumes and nail polish was available to complete the attire for an evening out.



This program was open four weekends and by appointment in 2014. Betty created a relaxed atmosphere for looking through the many styles and sizes available. Fitting rooms and full-length mirrors were available for trying dresses.



**Halloween Costume Swap** continues to be very popular. This program features two rooms filled with Halloween costumes, pieces of costumes, accessories, and decorations. During the three open weekends in October, 314 men, women, and children swapped last year's costume for another, new-to-the-recipient, costume. Betty solicits donations year round for this and the other reuse programs. Local retailers and consignment shops have been quite generous in their support of these programs, as has the general public.



# Reused, Repurposed & Recycled Content

Creative reuse, repurposing, and buying products made of recycled content go right alongside the 3 Rs.

Because of their importance the District set aside specific areas to increase awareness of each of these.

*The Green Garden* debuted in 2013 as a showcase of ecofriendly garden ideas and materials. As the welcome signs says, “Here you will find only repurposed items, products made of recycled content and materials found in nature.”

The garden’s perennials blossomed profusely in 2014, adding a splash of color to the outside wall of Creation Station. Larger-than-life flowers were fashioned from cups and saucers to add interest to the space. A charming addition to the garden area was a toad house placed alongside a kitchen sink filled with annuals.

All the different colors of Endurasafe recycled rubber mulch available through the District’s supplier, Cobalt Holding, are on display in the Green Garden. Visitors to the garden compare the colors and imagine how they might appear in their own yards. The garden’s design demonstrates the lasting quality of the mulch. It could be felt and walked on as visitors observed how the recycled rubber controls weeds better than wood.

Tractor tires, filled with some “naturally fertilized” pasture soil, supplied District staff and visitors with plenty of delicious tomatoes all season long.



## *The WeCycle Shop* features

containers to make recycling in your home or place of business easier. Products made of recycled content line the shelves. Some are ready for purchase, others have purchasing information. This area gives residents a resource to shop locally while thinking globally. The WeCycle Shop is located inside the drive-thru. A large colorful sign was added, along with a logo made of plastic bottle caps.

# Financial Summary

## Fiscal Year 2014

Cash Balance (January 1, 2014)

\$187,293

### Income

Taxes:	Property	\$702,686		
	Other (CVET)	\$601		\$703,287
Grants:	DC Foundation	\$99,470		\$99,470
Sales:	Recyclables	\$84,377		
	Hand Chairs	\$89		
	Bins	\$0		
	Mulch	\$1,822		
	We-Cycle Shop	\$38		\$86,326
Voided checks				\$0
Interest				\$176
Recycling Fees				\$4,634
Refunds				\$666
Additional Appropriation Transfers				\$0

### Total Income

\$894,559

### Expenses

100s:	Personal Services		\$457,364	\$457,364
200s:	Supplies			
	Office supplies		\$5,182	
	Processing supplies		\$5,592	
	Equipment expense		\$3,850	
	Fuel expense		\$36,278	
	Safety supplies		\$1,681	
	Other		\$1,244	\$53,828
300s:	Services and Charges			
	Advertising		\$16,597	
	Insurance		\$35,494	
	Utilities		\$32,497	
	Equipment repairs		\$26,986	
	Loan expense		\$41,806	
	Education		\$6,558	
	HHW disposal		\$10,579	
	Non-haz disposal		\$9,631	
	Other		\$14,493	\$194,641
400s:	Capital Outlay			
	Buildings		\$290	
	Equipment		\$4,871	
	Vehicles		\$0	\$5,161

### Total Expenses

\$710,994

### Transfers

Rainy Day Fund		\$10,000		\$10,000
----------------	--	----------	--	----------

Cash Balance (December 31, 2014)

\$360,858



# Working Together

The key to the District's success is in meeting the needs of our customers. Customer service is therefore of the utmost importance. Customers are our lifeblood.

To express appreciation to the community and to showcase the Recycling Center's operations, the District invites the public to its annual Customer Appreciation Day. This event affords the opportunity for new and existing customers to meet the staff, members of the Citizens Advisory Committee and Board of Directors.

CAC and Board members volunteer their time and sometimes even that of spouses or family members to help with these events. Photos were taken May 10, 2014.

## Citizens Advisory Committee

**Paul Filter**, Chairman

**Phil Piche**, Vice Chairman

**Bernadine Ickenroth**

**Bob Brookbank**

**George Gardner**

**Leon Werner**

**Nancy Lillie**

**Patty Bourquein**

**Ralph Thompson**

**Steve Lieland**

**Sandy Whitehead**,  
Rumpke Representative



## Board of Directors

**Shane McHenry**, President  
County Commissioner

**Dennis Carr**, Vice President  
Mayor of Lawrenceburg

**Art Little**, Board Secretary  
County Commissioner

**Doug Hedrick**  
Mayor of Greendale

**Kevin Lynch**  
County Commissioner

**Mel Davis**  
Lawrenceburg Utilities Director

**Randy Lyness**  
County Council

**Doug Garner**  
Attorney

*"Teamwork is the ability to work together toward a common vision."* Andrew Carnegie

