

annual report



reduce • reuse • recycle

2013

The mission of the Dearborn County Solid Waste Management District is to foster a sense of responsibility and inspire action by Dearborn County residents to reduce solid waste by creating an awareness and commitment to reduction, reuse and recycling programs.

New look, same great services!



reduce • reuse • recycle

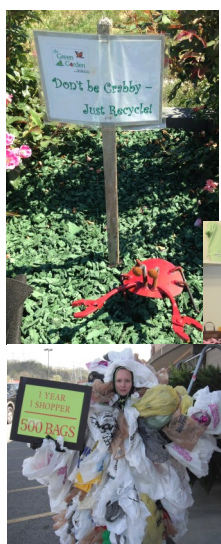
The District offers a variety of waste reduction, reuse and recycling services to County residents; it continually seeks to improve and expand these services. The new logo clearly represents the mission of the District and serves as a visual representation of the services it provides. It is a cohesive image that combines text and images to convey the mission of the District. The outermost layer of the logo, the recycling symbol, represents the chief function of the District and the backbone of its successes. The image of the Earth is incorporated as a reminder that Dearborn County and its efforts for environmental improvement are part of a global struggle. The three sections of the interior circle, each with its own symbolic arrow or arrows, represent the 3Rs: reduce, reuse and recycle. The District adopted the logo in July; it continues to be incorporated into existing materials.

Contents

What's New (4-5)

Customer Appreciation Day
Green Garden

WeCycle Shop
Bag Monster



Reuse (8-9)

Creation Station

Re-Prom
Costume Swap



↓ Reduce (6-7)

Education and
Outreach

Community Events



♻️ Recycle (10-13)

General Recycling
Commercial and School Recycling
Nuisance Waste and HHW
Dearborn Community
Foundation Grant



Financials (14) Boards (15)





New in 2013

Customer Appreciation Day



Bre Buell, shown here with her parents, won the hand chair.

2013 saw a change from the traditional Open House to Customer Appreciation Day. District staff got the opportunity to get to know over 150 of our customers who attended on May 4th. The event let us express our gratitude for their support and patronage.

- Each attendee received a cheese tray made from a wine bottle, a tree seedling with a tree protector and free lunch. Incandescent bulbs were exchanged for CFL's.
- The top two door prizes were an iPad and iPod, both donated by Bestway.



Dale Troy of Bestway presents Randy Hildebrand with his prize, an iPad.



District staff member, Joe Dittmer, explains how the horizontal baler is used to process corrugated and mixed paper.

- Other prizes included a hand chair made from recycled milk jugs and several gift sets, all of which had reusable products and/or products of recycled content.
- Visitors took self-guided tours of the Drive-Thru, Processing Center, Creation Station, Green Garden, and WeCycle Shop.



Citizen Advisory Committee members, Bob Brookbank and Paul Filter, help unload recyclables in the drive-thru.

The Green Garden

The Green Garden, Dearborn County's resource for eco-friendly garden ideas and materials, opened on May 4th. The area features green ideas for outdoor spaces large and small.



- The outdoor display area at the Recycling Center was designed and built by staff.
- All materials are natural, reused or recycled content and many are from local sources.
- It showcases all six colors of rubber tire mulch, made from Dearborn County tires and available for purchase.
- Brochures are available listing materials and purchasing information.



At Customer Appreciation Day Director BJ Ault answers questions about the Garden.

The We-Cycle Shop

We can *Close the Recycling Loop* by buying products made of recycled content. This innovative store allows residents to shop locally and think globally.

- The shop opened on Customer Appreciation Day.
- It is located in the drive-thru and open during drive-thru hours or by appointment.



Administrative Assistant Mindy Smith describes the concept of the WeCycle Shop to visitors during Customer Appreciation Day.

- Products made of recycled content are showcased; source and ordering information is offered.



- It offers unique products made of recycled content, including recycling containers for apartments, homes, or businesses; these are available for immediate purchase.

The Bag Monster

The Bag Monster is a national anti-plastic bag movement. Made of the 500 single-use plastic grocery bags an individual shopper will use in a year, the Monster draws attention to the wastefulness of disposable bags.

- In April 2013 the District joined the national movement with its own costume and event. The Monster visited the Lawrenceburg Kroger in celebration of Earth Day.
- The Monster returned to Kroger with a friend in November for America Recycles Day.
- On both occasions Kroger customers were given free reusable shopping bags and information about the District.
- CAC members Phil Piché, Bob Brookbank, Bernadine Ickenroth and Paul Filter are pictured here helping with the events.





Education and Outreach

The District offers free education and outreach programs to County residents of all ages. Educational programs stress the importance of reducing, reusing and recycling as the best ways to decrease waste and preserve the environment. Outreach programs and events use a project-based approach to engage participants.



- 8,425 people were reached through educational programs, outreach and community events.
- The number of students reached was up 49% while number of adults reached was up 233% and overall reach was up 24%.
- A total of 178 programs were given for students and adults, up from 127 in 2012.

- 77 of the programs given were in K-12 classrooms.
- 60 school age programs were given outside the classroom, including Big Brothers, Big Sisters and summer camp programs.
- 10 programs were exclusively for adults; many of these were held in partnership with the Lawrenceburg Public Library.
- 3 new educational programs were added to the District's offerings—Compost Stew, Compost Me and Composting 101.
- At Lawrenceburg High School, *Get Caught Green Handed* was incorporated into a week of contests and programs. The result was a less incentive-based and more education-centered event called Green Week.



- In December Adam's Art Supply and the Recycling Center partnered to bring *WreathCycling* to Central Elementary School. Students used materials from Creation Station to make wreaths for the Lawrenceburg Winter Wonderland. Lawrenceburg Main St. gave prizes.

- District Educator Molly Resendes worked with educators from around the State to create a curriculum guide for environmental education programs. The booklet was adopted by IDEM as the Indiana Environmental Education Guide Book. The AISWMD recognized Molly and her editing partner Kim Schafstall of Johnson County at its annual conference for their extra efforts on the project .



r
e
d
u
c
e

↓

Community Events



A presence at planned community events and hosting special events for the general public are vitally important to the mission of the District. They create positive exposure and generate excitement. Thousands of the people reached through educational efforts were attendees at community events.

- The Dearborn County 4-H Fair is held for a week each June. This year the Recycling

Center's booth was downsized and the location changed, which proved to be quite successful. Themed "Wild about Recycling," the display included recycled content prizes, seen above. A hand chair completed the prize selection.

- In July the District presented *Wild Recycling Trivia* at the Bright Festival. The game was a free knowledge challenge game that rewarded winners with recycled content pencils, pens or bookmarks. Attendees also signed "Pledge to Recycle" cards to win a hand chair.

- *I Luv Lawrenceburg Fall Fest* is an annual event held on Walnut Street in Lawrenceburg. As the event is entirely free, it draws huge crowds. With the help of CAC members, the District had a presence for all of the three day event. Hand chairs served to lure passersby, who were asked about their recycling habits and given information about District services.



- The Recycling Center was *Cruisin' into Recycling* for the "Cruisin' the 50's" themed Aurora Farmers Fair Parade in October. District staff constructed the float with only reused materials. It featured a drive-in theater with vintage automobile and a soda shop with bottle deposit. The Recycle Guy (animated by staff member Cameron Metcalfe) made an appearance for the event, dancing along the route to The Coaster's hit, "Yackety Yak."

- The Big Brothers, Big Sisters Community-Based program hosts an annual Fall Fun Day at Wormies in Lawrenceburg. Adults and students made decoupage jack-o-lanterns from supplies provided by Creation Station.



r
e
d
u
c
e





Creation Station

Dearborn County's reuse center diverts reusable materials from landfills while supplying non-profit educators with valuable resources. Materials are donated during office hours by individuals and local businesses. They are made available to classroom teachers, homeschool parents, non-traditional educators, 4-H leaders, Scout leaders, and more.



- 361 customers reused 7,758 lbs of materials.
- The number of customers increased 20% while pounds reused increased 54% over 2012.
- Since 2004 Creation Station has diverted over 36 tons of material from landfills.
- 59 educational programs (34% of total programs) utilized materials from Creation Station.

- Materials are made available seasonally or upon request.
- Displays for crafty reuse and storage were added in 2013 to generate enthusiasm and spark ideas.



- Craft projects, such as a gaggle of geese made from an egg carton, are always on display.
- Creation Station customers are encouraged to bring reuse ideas and examples to share.



- The Retired Seniors Volunteer Program has used materials to create over 7,500 learning games and classroom resources for teachers.
- Reuse Coordinator Betty O'Banion solicits donations from local businesses to augment the selection provided through individual donations. She ensures that all materials are well displayed and easily accessible. She is a great source for answers and suggestions.



reuse



Re-Prom

This reuse program became a reality in the spring of 2013. Re-Prom offers a way for prom-goers to swap their once-worn formal gowns for new or *new-to-you* options without creating the waste or financial burden of buying new.



Inventory Spring 2013



There are hundreds of available dresses...

- Several local donations provided a modest beginning for the swap.
- While many shopped, eleven went home with "new-to-you" dresses.
- After prom season, Reuse Coordinator Betty O'Banion sought dress donations.

- Jackie Kelly of Jamie Jovanna Bridal donated hundreds of NEW dresses for the next swap.
- Shoes, gloves, jewelry and other accessories are also part of the swap.



and accessories too.

Costume Swap



The 3rd annual Costume Swap was another success with over 100 costumes taken for re-spooking, re-wearing and re-scaring. Children and adults chose to reduce waste and disguise themselves as witches, goblins, clowns, pirates, princesses and more.

- The new location has two rooms packed with new and gently used costumes for infants, children, teens and adults.
- Accessories were available to complete any costume, including: hats, gloves, wigs, make-up, hair paint and fake nails.
- Festive autumn and Halloween indoor/outdoor decorations were offered to spook and delight.
- Each visitor chose a jack-o-lantern bucket to collect their trick-or-treat loot.



r
e
u
s
e





General Recycling



The volume of general recyclables processed and sold was down slightly in 2013. The 3% difference was offset by the amount of recyclables stored on site at the end of the year. Each commodity was being held until a full semi-trailer could be shipped, thus reducing transportation costs and garnering higher prices per load.

- Aluminum and tin cans are usually baled and stored while waiting for market prices to peak. This year #1 and #2 plastic bottles were also stored until separate trailer loads were ready.
- Hardcover book collection nearly doubled. In 2013, the District offered a free pick-up service for schools in order to make recycling books more convenient.
- Corrugated cardboard collection increased 37 tons. While some came from new commercial customers, the majority resulted from a partnership with the City of Lawrenceburg.



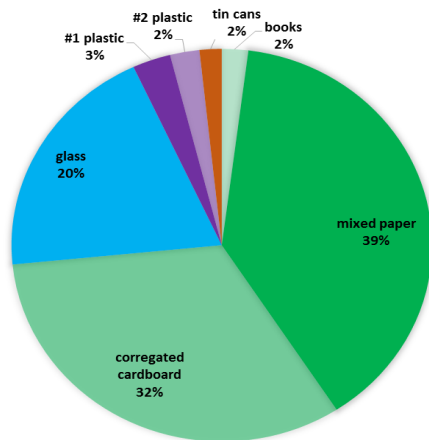
City of Lawrenceburg employees drop off cardboard twice a week.



- Lorel O'Banion, Jr., assumed the position of Operations Manager in April. He had served as Assistant Operations Manager since June, 2009. His experience and skills made him a good fit and the transition a smooth one.

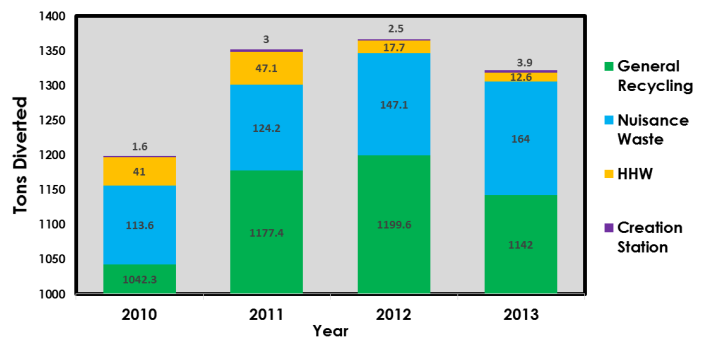
Junior and Brian of Environmental Enterprises review lab packs before the Household Hazardous Waste is shipped.

Summary by the Numbers



Recyclables Sold in 2013

A total of 1,142 tons of material were sold for recycling in 2013. Seen at the left is a breakdown of the materials categorized as general recyclables. Aluminum cans were collected in 2013, but do not appear on this chart because they were not sold.



Yearly Diversion

Seen at the right is a comparison of tons diverted by four District programs from 2010 through 2013.



Commercial and School Recycling

Over 150 local businesses and schools have their general recyclables picked up by the District on a weekly, bi-weekly or as-needed basis. The commercial drivers are Leslie Johnson and Randy Disch (at right); the Commercial Program Coordinator is Betty O'Banion.



- Last year, 154 businesses took advantage of this free service, a 23% increase over 2012.
- 1.25 million pounds of recyclables were collected on the commercial route in 2013, compared to 1 million the previous year.



Elmer Campbell and Joe Dittmer clean commercial recycling containers.

- The Reward for the Most Improved Commercial Recycling Program will go to Comb's Pizza in Aurora, which collected 7,494 pounds of recyclables, achieving an increase of 124.5%.
- 260,877 pounds of recyclables were collected from the three school corporations, five private schools and IVY Tech Riverfront Campus.
- Dearborn County Schools saved 6,420 trees by recycling 290.5 tons of paper products (including those collected by Abitibi Paper Retriever).

REwards



Tami Cunningham, Executive Director and Betty O'Banion, District Commercial Program Coordinator

These special acknowledgements are given to three groups of excellent recyclers yearly. Each REward is a triangular trophy made of hand-crafted 100% post-consumer green glass. Business recipients keep their REwards while school REwards are traveling trophies.

Most Improved Commercial Recycling Program was awarded to the Aurora S.I.E.O.C. office for collecting 2,827 pounds of recyclables, an increase of 63.6%.

Most Improved School Recycling Program was awarded to Lawrenceburg High School for collecting 14,327 pounds of recyclables, an increase of 13.3%.

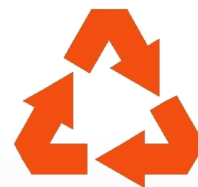


Bob Brookbank, LHS Recycling Coordinator, Bill Snyder, LHS Principal and Molly Resendes, District Educator



Most Recycling per Capita was awarded to Manchester Elementary School for collecting 11,287 pounds of recyclables, averaging 36.8 pounds per student.

Janet Platt, Manchester Principal, members of Student Council and BJ Ault, District Director



r
e
c
y
c
l
e

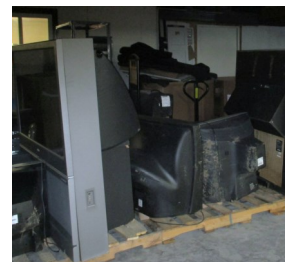


reduce • reuse • recycle



Nuisance Waste and Household Hazardous Waste

Nuisance wastes are items that should not be landfilled but are not easily recycled. These include appliances with Freon, electronics and tires. Nuisance wastes are only accepted at the Recycling Center during drive-thru hours. Household Hazardous Wastes include dangerous items such as chemicals, pesticides, and oil-based paint. The District offered monthly collection of HHW, April thru November in 2013.



- The 11.6% increase in nuisance wastes during 2013 was primarily an increase in the amount of electronics collected, nearly 20 additional tons. Pictured above are some of the electronics picked up and delivered to the Recycling Center by City of Greendale employees.



- More than 5,200 tires were received at the Recycling Center, costing the District over \$9,000 to recycle. Of those tires, 4,752 were passenger, 130 truck, 35 tractor, and 348 ATV. The huge pile of tires pictured at the left was collected during local cleanups in the spring.

- Tires are shipped to a remanufacturing plant where they are shredded into mulch. The resulting mulch is available for sale at the District in six colors.
- Over 230 residents participated in scheduled HHW collections and the average resident brought 107 pounds of HHW.
- During 2013, a total of 12.2 tons of HHW were properly disposed of by the District.



- Nearly 2.5 tons of oil-based paint and paint products were collected.
- Residents brought over .5 tons of pesticides to the events, ensuring safe disposal of these poisonous materials.

Tree-Cycling

In December, the District partnered with the City of Lawrenceburg to offer live tree recycling again.

- This year, trees were dropped at the Recycling Center and the Lawrenceburg City Garage.
- 120 trees were recycled through this program. They were made into mulch that Lawrenceburg will use at local parks in the spring.



Dearborn Community Foundation Grant



Art Workman operates the controls on the new baler to compact cardboard before adding more.

Through the years the Dearborn Community Foundation, particularly the City of Lawrenceburg Grant Program, has awarded the District grants to help with the purchase of collection and processing equipment, including trucks and trailers. These grants have allowed the District to continue to grow and offer additional services to the residents and businesses of Dearborn County. In 2013 the District received a \$97,000 grant through the Dearborn Community Foundation, City of Lawrenceburg Grant Program.

- A second horizontal baler was purchased to accommodate growing quantities of corrugated received from the City of Lawrenceburg and collected through the District's Commercial Program. Pictured at right, a bale of this cardboard is being removed from the new baler by Forklift Operator Phil Darling.



- A larger sorting belt and conveyor system was requested in anticipation of receiving recyclables from curbside collection. The larger hopper makes for time-effective sorting and will provide valuable space for complex sorting.

- A claw attachment was needed for the skid steer to facilitate moving corrugated from the holding area into the baler. At right, the claw completes this action.



- A larger and more durable cargo trailer was requested to replace the first trailer purchased for the commercial recycling program, which was showing wear.

Document Shredding

The District purchased its document shredder in 2012 with funds received through the Dearborn Community Foundation, City of Lawrenceburg Grant Program.

- Because of this purchase, residents and local businesses are able to watch shredding on-site.
- 86 customers, an increase of 12%, took advantage of this free service in 2013.



r
e
c
y
c
l
e





Financial Summary

Income Statement

Dearborn County Solid Waste Management District Fiscal Year 2013

Cash Balance (January 1, 2013)

\$212,938

Income

Taxes:	Property	\$664,305		
	Other (CVET)	\$646		\$664,951
Grants:	DC Foundation	\$97,121		\$97,121
Sales:	Recyclables	\$69,675		
	Hand Chairs	\$258		
	Bins	\$25		
	Mulch	\$1,368		
	We-Cycle Shop	\$26		\$71,351
Voided checks				\$575
Interest				\$293
Recycling Fees				\$1,087
Refunds				\$2,294
Additional Appropriation transfers				\$11,900
Total Income				\$849,572

Expenses

100s:	Personal Services		\$465,500	\$465,500
200s:	Supplies			
	Office supplies		\$5,319	
	Processing supplies		\$10,000	
	Equipment expense		\$6,716	
	Fuel expense		\$38,497	
	Safety supplies		\$2,586	
	Other		\$975	\$64,093
300s:	Services and Charges			
	Advertising		\$19,575	
	Insurance		\$39,271	
	Utilities		\$30,272	
	Equipment repairs		\$18,155	
	Loan Expense		\$41,415	
	Education		\$17,840	
	HHW disposal		\$11,654	
	Non-haz disposal (tires/electronics)		\$14,363	
	Other		\$13,952	\$206,497
400s:	Capital Outlay			
	Buildings		\$3,691	
	Equipment		\$112,061	
	Vehicles		\$23,375	\$139,127
Total Expenses				\$875,217

Cash Balance (December 31, 2013)

\$187,293

Special Thanks to Dave Schorsch

Dave Schorsch was instrumental in the growth of the Recycling Center during his eight years of service. He was hired as a part-time driver in August 2004; His knowledge, experiences and skills led to a full time position as Operations Manager on December 4, 2004. He retired on March 7, 2013.



- During his tenure with the District, Dave helped to establish a permanent facility for the collection of HHW. Also, leased recycling bins were gradually replaced with District-owned trailers, the contents of which were processed at the Recycling Center.
- Dave offered experience in production supervision and had skills in time/cost analysis for manufacturing. During his eight years with the District he became certified in OSHA Compliance Workplace Safety, OSHA 24 HR HAZWOPER, DOT Hazmat, and First Aid/CPR.
- Dave sought always to secure the best interests of the District. He was appreciated as a co-worker and valued as a leader.
- In retirement Dave will pursue his many interests: goats, fishing, reading, genealogy, and grandchildren, without the pressures of an alarm clock or traffic.



Board of Directors

Shane McHenry, Board President
County Commissioner

Doug Hedrick, Board Vice President
Mayor of Greendale

Dennis Carr, Board Secretary
Mayor of Lawrenceburg

Art Little
County Commissioner

Kevin Lynch
County Commissioner

Mel Davis
Lawrenceburg Utilities Director

Randy Lyness
County Council

Doug Garner
Attorney



Citizens Advisory Committee

Paul Filter, Chairman

Phil Piche, Vice Chairman

Bernadine Ickenroth

Bob Brookbank

George Gardner

Leon Werner

Patty Bourquein

Ralph Johnson

Ralph Thompson

Steve Lieland

Sandy Whitehead,
Rumpke Representative



