

**REDUCE
REUSE
RECYCLE**



2024

Annual Report

dearborncountycycles.com



ABOUT US

The Dearborn County Solid Waste Management District, also known as the Dearborn County Recycling Center or DCRC, is located in Aurora, Indiana. This facility serves as the operation's hub for recycling collection, as well as holds the Drive-Thru, Household Hazardous Waste collection, and Creation Station, which includes Costume Swap, ReProm, and the Lending Station. From this hub, sixteen 24/7 recycling drop-off locations around Dearborn County are serviced, as well as recycling collection from 17 schools and close to 200 small businesses in the county.

2024 marked the DCRC's 31st year as a solid waste district and 20 years as a collection and processing facility for recycling. It continues to be the only entity within Dearborn County that accepts televisions for recycling, as well as the only collection point for household hazardous waste.

Our efforts are continually focused on reducing the amount of waste being sent to landfills through reduction, reuse, and recycling programs.



MISSION

The mission of the Dearborn County Solid Waste Management District is to foster a sense of responsibility and inspire action by Dearborn County residents to reduce solid waste by creating an awareness and commitment to reduction, reuse, and recycling programs.

CONTACT US



10700 Prospect Lane
Aurora, IN 47001



(812) 926-9963
(812) 926-9668 fax



Office Hours:
Monday – Friday: 8am – 4pm

Drive-Thru Hours:
Monday – Friday: 9am – 4pm
Wednesdays: 9am – 6pm



DearbornCountyRecycles.com



@DearbornCountyRecycles



dearborncountyrecycles

PROGRAMS & SERVICES



GENERAL RECYCLING PROGRAM

- Glass bottles and jars
- Aluminum cans and bottles
- Steel/tin food containers and empty aerosols
- Cardboard boxes, clean pizza boxes, and white and gray paper boxes
- Newspaper, magazines, office paper, paper bags, and envelopes
- Cartons and plastic bottles, jugs, tubs, and cups
- Hefty ReNew™ Bag program for styrofoam and hard-to-recycle plastics

DRIVE-THRU SERVICE

- General recycling
- Document shredding
- Electronics (computers, monitors, phones, small kitchen appliances, etc.)
- Non-alkaline batteries
- Motor oil and filters
- Cooking oil
- Scrap metal
- Televisions
- Appliances
- Tires
- Latex paint

HOUSEHOLD HAZARDOUS WASTE COLLECTION

Including, but not limited to, household chemicals, oil-based paints and stains, cleaners, pesticides, herbicides, and flammable liquids

COMMERCIAL/SCHOOL RECYCLING

Program serves small businesses and schools throughout Dearborn County

EDUCATION PROGRAMS

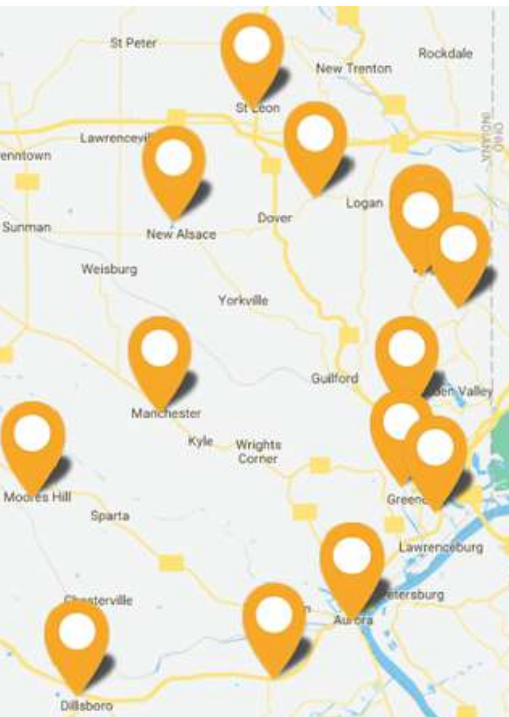
Education and outreach programs on a variety of environmental issues provided to schools, youth, and other community organizations

CREATION STATION

- Reuse center dedicated to the diversion of reusable materials from disposal in landfills to educators and non-profit groups in Dearborn County
- Featuring Costume Swap and ReProm, programs focusing on the reuse of gently worn Halloween costumes and formal dresses
- Lending Station allows individuals to borrow one-time use items for weddings, parties, and events
- Holiday Giveaway - donations of Christmas and other holiday items are collected throughout the year in the Recycling Center Drive-Thru and given out to the public in early December

RECYCLING LOCATIONS

The DCRC owns and operates 16 source-separated recycling trailers, with one or two trailers located at 14 of the sites listed below 24 hours a day, seven days a week. Plastics-only collection trailers are also available at 4 locations: the Aurora Rec Community Center, Lawrenceburg, North Dearborn, and Bright Meadows. The DCRC has five additional cardboard-only collection containers for Aurora, Bright Meadows, Lawrenceburg, North Dearborn, and St. Leon.



AURORA	The Heart House 6815 US 50
AURORA	Aurora Rec Community Center 404 Green Blvd.
BRIGHT	Bright Elementary School 22593 Stateline Rd
BRIGHT	Bright Meadows Park 2095 Einsel Rd
DILLSBORO	Behind the Fire Dept between Front St. & Western Row
GREENDALE	Behind Greendale Park Rand St.
LAWRENCEBURG	County Fairgrounds US 50
MANCHESTER	Manchester Ballfields St. Route 48 & County Farm Rd
MOORES HILL	Intersection of Manchester St. & College St.
NEW ALSACE	American Legion Post 452 25329 Legion Rd
N DEARBORN	Lot on Sawdon Ridge Rd 5678 N. Dearborn Rd
ST. LEON	St. Leon Fire Department 28870 St. Joe Dr.
STATE RT 1	Tanner Valley UM Church 19235 St Rt 1
YORKVILLE	Widolff's General Store 7981 Yorkridge Rd



PLASTIC TRAILERS
Aurora ARCC
Bright Meadows
Lawrenceburg
North Dearborn
St. Leon



CARDBOARD TRAILERS
Aurora ARCC
Bright Meadows
Lawrenceburg
North Dearborn
St. Leon



10700 Prospect Lane
Aurora, IN 47001



Monday-Friday
9am – 4pm
Wednesdays
9am – 6pm



RECYCLING CENTER DRIVE-THRU



The DCRC offers Drive-Thru recycling service for general recyclables, electronics, appliances, tires, batteries, household hazardous waste, scrap metal, and batteries. Residents can bring items to the Drive-Thru year-round. Most items are free of charge. The DCRC charges for televisions, tires, and freon appliances.

TOTAL CUSTOMER REPORT

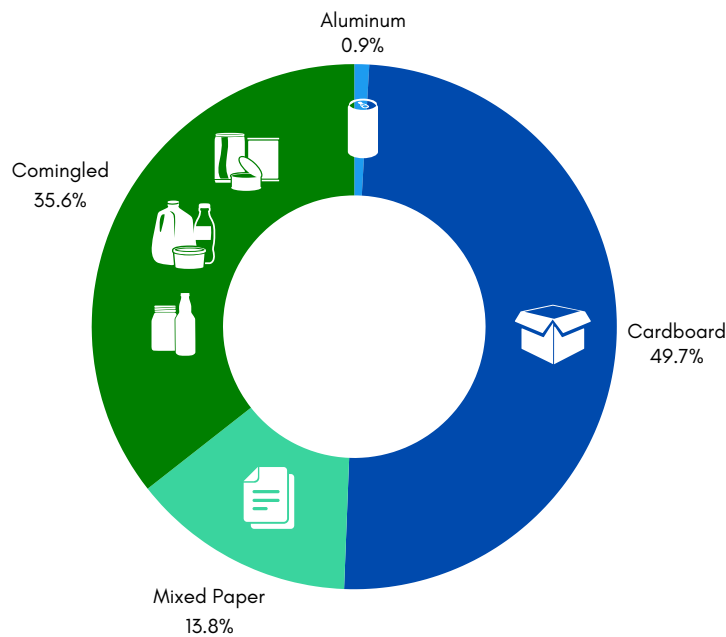
	JAN	FEB	MAR	APR	MAY	JUN	JUL	AUG	SEP	OCT	NOV	DEC	TOTAL 2024	TOTAL 2023
Total Drive-Thru Visitors	461	496	512	523	539	558	607	528	516	561	505	492	6,298	5987
BREAKDOWN														
Antifreeze	5	4	4	3	7	10	7	7	7	10	7	7	78	64
Batteries (auto)	0	0	2	5	8	5	3	5	3	3	2	7	43	39
Batteries (household)	20	27	21	19	20	29	32	32	33	32	24	28	317	307
Computers	4	1	5	6	2	9	4	7	2	2	9	7	58	87
Document Shredding	30	43	41	41	31	28	35	29	29	35	14	30	386	356
Flourescent Lamps	5	5	6	4	8	5	6	4	6	7	5	3	64	69
Freon Appliances	10	19	9	15	23	17	21	12	17	18	25	10	196	187
General Recycling	313	349	324	307	330	349	390	323	318	359	283	330	3,975	3878
HHW walk-in	12	18	28	24	23	30	36	29	48	30	46	28	352	498
Ink Cartridges	3	3	3	2	1	2	4	2	3	7	8	2	40	53
Motor Oil	23	30	48	46	44	57	52	52	50	55	58	41	556	410
Oil Filters	4	7	6	14	6	5	7	9	6	8	11	6	89	82
Other Electronics	9	6	8	6	9	9	6	12	4	5	5	7	86	95
Printers	3	5	2	3	8	5	7	9	2	3	8	5	60	74
Reuse Donation	43	37	39	37	41	40	48	33	33	43	35	42	471	459
Scrap Metal	26	37	44	49	51	58	70	45	51	54	46	30	561	505
Tires	9	18	18	29	22	17	34	34	31	25	15	13	265	245
TVs	28	29	29	29	26	30	40	34	23	33	39	31	371	373
Water Based Paint	18	34	23	31	38	35	46	25	28	32	26	22	358	291

RECYCLING BY THE NUMBERS



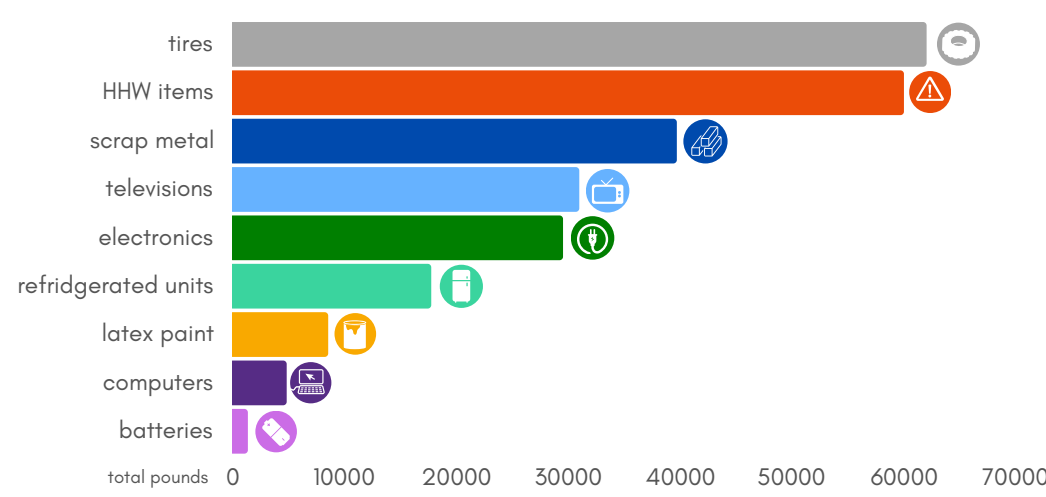
The numbers below represent the total number of general recyclables collected by the DCRC from commercial accounts, the 24/7 drop-off recycling trailer sites, and the Drive-Thru.

TOTAL GENERAL RECYCLABLES



- Aluminum cans and bottles
- Cardboard boxes, and brown, white, and gray paper boxes
- Newspaper, magazines, office paper, paper bags, and envelopes
- Glass bottles and jars
- Steel/tin food containers and empty aerosols
- Cartons and plastic bottles, jugs, tubs, and cups
- Hefty ReNew™ Bag program for styrofoam and hard-to-recycle plastics

TOTAL COMMODITY/NUISANCE WASTES



RECYCLABLES AND NUISANCE WASTES



COMMODITY/ GENERAL	JAN	FEB	MAR	APR	MAY	JUN	JUL	AUG	SEP	OCT	NOV	DEC	TOTAL 2024	TOTAL 2023
Aluminum (UBC)	20,880												20,880	20,880
Cardboard (OCC)	99,270	98,053	96,948	101,569	99,392	98,405	104,152	101,934	66,792	101,212	67,593	101,814	1,137,134	1,253,026
Glass	27,800	27,400		26,340					27,360				108,900	156,080
Mixed Paper (OMP)*	26,866	27,267	27,016	27,229	29,844	30,988	22,530	26,266	18,573	29,997	19,073	30,032	315,681	347,307
40 yard on-site	4,220				3,860		4,840	3,740	3,120			7,560	27,340	3,940
Compactor Receiver**	50,840	50,720	42,880	53,960	52,220	43,980	54,420	51,580	53,820	59,500	43,600	53,720	611,240	542,220
Commingled - St. Leon***	11,720	11,620	8,240	11,700	9,840	9,440	4,000	0	0	0	0	0	66,560	143,420
COMMODITY/ NUISANCE														
Christmas lights		362											362	1,477
Scrap Metal	5,260			4,400	4,800	4,280	5,400	5,760		4,320	5,480		39,700	80,651
Refrigerated units		507	3,344		1,839	3,506	2,167			3,046	3,330		17,739	22,735
Tires	200	5,340	7,150		10,794	4,612	4,672	13,002	6,028	730	7,426	2,080	62,034	71,994
Batteries (alkaline)					1,015	327							1,342	3,065
Televisions		4,807	2,588		5,604	2,715	3,047			4,569	3,217	4,430	30,977	30,081
Computers		760	700		937	861	735					820	4,813	5,924
Wire		553			433					717			1,703	3,389
Electronics		5,278	4,500		2,858	3,147	2,165			4,184	2,891	4,501	29,524	35,095
HHW/Commodity	1,859.0	3,291.0	1,096.0	4,326.0	10,502.0	4,506.0	10,183.0	1,645.0	3,880.0		16,712.0	2,008.0	60,008	0
Matthew 25			3,281					2,570		2,674			8,525	13,373
Total Pounds	248,915	235,958	197,743	229,524	233,938	206,767	218,311	206,497	179,573	210,949	169,322	206,965	2,544,462	2,712,907
General Items Total (Tons)	120.8	107.5	87.5	110.4	97.6	91.4	95.0	91.8	84.8	95.4	65.1	96.6	1,143.9	1,332.0
Nuisance Items Total (Tons)	3.7	10.4	11.5	4.4	19.4	12.0	14.2	11.5	5.0	10.1	19.5	6.9	128.4	147.2
Total Tons	124.5	118.0	98.9	114.8	117.0	103.4	109.2	103.2	89.8	97.0	84.7	103.5	1,263.8	1,479.2

*Mixed paper now includes hard cover books, that were previously reported separately.

**Compactor receiver includes steel food cans, cartons, plastic bottles, jugs, and tubs.

***The Comingled Rumke container at St. Leon was removed in July and replaced with Dearborn County Recycling Center trailers.



MATTHEW 25 MINISTRIES



The Dearborn County Recycling Center donates the latex paint collected in the Drive-Thru to Matthew 25 Ministries. The paint is rebled and shipped to communities affected by hurricanes, floods, and tornadoes.

PALLETS OF PAINT COLLECTED	LANDFILL COST SAVINGS	POUNDS OF PAINT REPURPOSED
7	\$3,200	8525

HOUSEHOLD HAZARDOUS WASTE (HHW) RECYCLING/DISPOSAL



COMMODITY/ HHW	JAN	FEB	MAR	APR	MAY	JUN	JUL	AUG	SEP	OCT	NOV	DEC	TOTAL 2024	TOTAL 2023
Aerosols					682.0		129.0				421.0		1,232.0	876.0
Aluminum paint													0.0	1,200.0
Asbestos											1.0		1.0	0.0
Auto batteries	763.0			958.0				669.0			929.0		3,319.0	5,007.0
Brake fluid													0.0	0.0
Compressed gases					24.0						16.0		40.0	0.0
Corrosive liquid, basic					228.0		200.0				526.0		954.0	250.0
Corrosive liquid, acidic					34.0		539.0				284.0		857.0	573.0
Corrosive solid													0.0	0.0
Flammable liquid					2,290.0		1,196.0				679.0		4,165.0	9,566.0
Flammable solid							1.0				1.0		2.0	0.0
Ink jet cartridges													0.0	0.0
Freon											9.0		9.0	0.0
Cooking oil													0.0	0.0
Helium													0.0	0.0
Isocyanates											1.0		1.0	0.0
Liquid acids													0.0	0.0
Lithium batteries													0.0	400.0
Fire extinguishers					26.0		28.0				68.0		122.0	400.0
Fluorescent and incandescent bulbs		1,259.0			1,040.0						3,070.0		5,369.0	1,924.0
Mercury							101.0						101.0	0.0
Non-hazardous liquids					604.0		336.0				390.0		1,330.0	1,426.0
Non-hazardous solids													0.0	0.0
Non-regulated oil & grease													0.0	0.0
Oxidizing solid							174.0						174.0	200.0
Oxidizing liquid							179.0				203.0		382.0	362.0
Oil-based paint					2,569.0		2,903.0				2,712.0		8,184.0	8,604.0
Latex paint			3,281.0					2,570.0		2,674.0			8,525.0	13,373.0
PCB light ballast											385.0		385.0	
Pesticide liquids					519.0		495.0				484.0		1,498.0	1,982.0
Pesticide solids					431.0		207.0				526.0		1,164.0	800.0
Propane					15.0		148.0				128.0		291.0	1,800.0
Putty and adhesives					592.0		1,979.0				122.0		2,693.0	2,989.0
Resin solution											93.0		93.0	0.0
Refrigerant gases													0.0	0.0
Ni-CAD + NiMH													0.0	0.0
Anti-freeze												600.0	600.0	3,826.0
Used motor oil & filters	1,096.0	2,032.0	1,096.0	3,368.0	1,448.0	2,120.0	1,568.0	976.0	3,880.0		5,664.0	1,408.0	24,656.0	21,560.0
Polychlorinated biphenyls	0.0	0.0											0.0	346.0
Total Pounds	1,859	3291.0	4377.0	4326.0	10502.0	2120.0	10183.0	4215.0	3880.0	2674.0	16712.0	2008.0	66,147	77,464.0
Total Tons	0.9	1.6	2.2	2.2	5.3	1.1	5.1	2.1	1.9	1.3	8.4	1.0	33	39

Months with blank spaces do not indicate that the DCRC did not collect those items during that month. The weights are calculated based on when the vendors, who the DCRC uses for recycling, pick up the items from the DCRC.

WASTE VS. RECYCLING

DEARBORN COUNTY WASTE 2024

		Waste (tons)
Rumpke	Hidden Valley Lake	2,016.37
	Dillsboro	517.49
	Rest of Dearborn County	11,726.77
Best Way	City of Greendale	2,001.52
	City of Lawrenceburg*	5,984.54
	Rest of Dearborn County*	13,970.61
Total		36,217.30

*These are estimates. No data available from Best Way.

DEARBORN COUNTY RECYCLING 2024

		Waste (tons)
Dearborn County	Recyclables & Nuisance	1,263.80
	Household Hazardous Waste	33.00
Rumpke	City of Greendale	295.99
	Hidden Valley Lake	337.59
	City of Lawrenceburg	173.44
	Town of Dillsboro	20.72
	Commercial Recycling	307.11
Total		2,431.65

Two waste haulers, Best Way and Rumpke, offer private trash hauling services in Dearborn County.

Greendale and Lawrenceburg have their own sanitation departments and haul waste for their respective cities; both haul their waste to the Best Way Transfer Station in Greendale.

Greendale offers single-stream curbside recycling to its residents and Lawrenceburg offers corrugated cardboard collection to its businesses and curbside recycling to its residents. Both haul their materials to Rumpke in Cincinnati for processing.

The diversion rate is the percentage of waste diverted away from landfills. The weights of all recyclables are not captured in the table to the left due to limitations of data collection from private industry. Dearborn County's diversion rate remains at 6% for 2024.





REUSE PROGRAMS

REUSE SERVICES USED

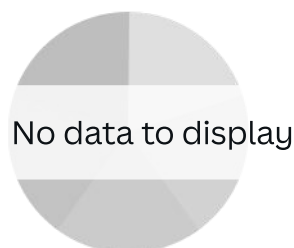
	CUSTOMERS
Reuse Donation	471
Costume Swap	1,150
ReProm	627
Creation Station	338
Teacher Deliveries	406
Holiday Giveaway	405

SCHOOL DELIVERY PROGRAM

The School Delivery Program has just completed its 8th year. This program was put in place to help teachers and staff that are unable to visit Creation Station during open hours. Deliveries are made to teachers in up to 16 different Dearborn County schools once a month during the school year based on e-mail requests. 406 teacher deliveries were made in 2024 to 16 schools totaling 1,800 lbs. during the months that school was in session.

POUNDS SAVED FROM THE LANDFILL

- Holiday Giveaway
- Creation Station
- Teacher Deliveries

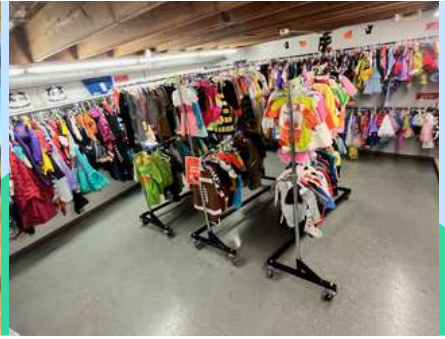


CREATION STATION

Creation Station is Dearborn County's reuse center and one of the greatest local resources for non-profit organizations. Generous donations from both Dearborn County individuals and businesses help make this program successful. Creation Station has a large assortment of office, educational, school, and craft supplies to offer teachers, church leaders, 4-H leaders, Scout leaders, and other non-profit groups. Creation Station has saved many teachers and non-profit organizations a lot of money over the years. Creation Station is open on Wednesdays from 1-6 pm. There were 338 customers in 2024 and 12,779 pounds of material disbursed, not including deliveries from Creation Station to the teachers previously discussed. Since 2004, the Creation Station has diverted close to 85 tons of material from the landfill.

LENDING STATION

Lending Station is a great program for people who are having big events such as weddings, graduation parties, showers and other like events. Items such as glassware, table coverings, and decorations in multiple quantities are loaned out free of charge. Using the Lending Station is a great way to save a lot of money on a special event. Like the Creation Station, this program is made possible with donations from the community. Lending Station was used for 62 different events in 2024. The inventory can be found on our website at dearborncountycycles.com.



REPROM

ReProm is the District's formal dress exchange program. 2024 marked its twelfth year as this program started in 2013 with twelve dresses. There are now around 1,200 dresses that can be worn for any formal occasion or event, with the most popular event being prom. Many girls purchase a dress and wear it one time. This exchange program allows them to bring in a dress that they do not plan on wearing again and swap it out for one that someone else has exchanged or donated. This program saves families money as it cuts down on the expense of the prom and circulates dresses that would just hang in a closet for years before possibly ending up in a landfill. ReProm is open all year on Wednesdays from 1-6 pm with special dates and times around prom time.

Visits to eleven area high schools with sample dresses and information concerning special hours for ReProm were made during lunch times in February. Appointments were required during prom season. Girls who did not have a dress to exchange gave a donation. These donations are used to purchase dresses on sale and replace the dresses that were taken in order to keep a good inventory of all sizes. There are also a lot of dresses directly donated to ReProm from people in the community who have dresses they no longer need. ReProm had 627 visitors with 336 of those actually shopping for a dress. 303 dresses were exchanged in 2024, which is over a 90% success rate.

COSTUME SWAP

Costume Swap was open 12 days in October with a total of 1,150 customers. Costume Swap offers over 1000 costumes, lots of makeup, accessories, and Halloween decorations. Customers who did not have a costume to exchange gave a donation. This money is used to buy new costumes at clearance prices to help restock Costume Swap.



HOLIDAY GIVEAWAY

2024 was the District's sixth Holiday Giveaway and was held for one day, Saturday, December 7th. Thanks to the help of several volunteers and employees, the warehouse was turned into a holiday wonderland full of decorations, lights, trees, ornaments, and much more. There were 400 happy customers that took holiday and craft supplies home, including 65 Christmas trees. Holiday items were collected in the Drive-Thru throughout the year and stored on skids in the Warehouse loft. The Holiday Giveaway allowed many individuals and non-profit organizations to get holiday decorations that would have otherwise ended up in the landfill.



EDUCATION & OUTREACH PROGRAMS

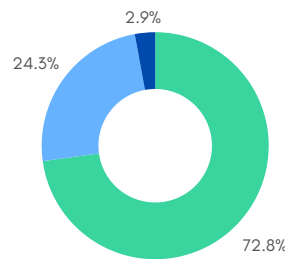
The Dearborn County Recycling Center offers free environmental education programs and participates in events through community outreach. Educational programs are available for schools, youth, and other community organizations upon request. Programs are for youth and adult residents, typically lasting less than an hour per session.

Outreach programs generally consist of the Recycling Center having a booth and sharing recycling information with residents. Games and giveaways at the booth are used to share information and services with the community. The DCRC also offers tours of the facility for youth (ages 8 and up) and adults.

PROGRAM & OUTREACH SESSIONS

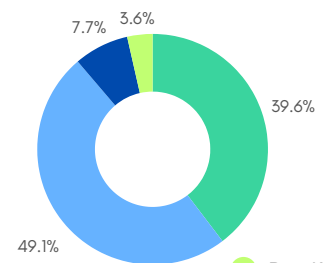
PROGRAM	SESSIONS
Worm Composting	60
Paper Recycling	58
Edible Landfill	20
Freddy Fish	7
3Rs	6
Compost Stew	3
Enviro-Jeopardy	3
DCRC Tour	2
How Do They Do That	2
Renewable Is Doable	2
Green Cleaning	1
Outreach -- Dr. Seuss Week	--
CASA Youth Summit	--
ECMS Giveback Day	--
Outreach -- Career Day	--

2024 SESSIONS



- in classroom
- school age non-classroom
- community

YOUTH PROGRAMS BY GRADE LEVEL



- Pre-K
- K-2
- 3-5
- 6-12

Programs in 2024 consisted of both a traditional classroom setting, as well as programs held with groups such as the Girl Scouts. Advertising via social media and local newspaper outlets continued to be a great outlet for community and adult education. Overall, 4,276 students and 299 adults participated in the DCRC's education programs.

In April, the DCRC celebrated Earth Day by sponsoring a *Chalk the Walk Earth Day Contest* for students. The DCRC offered free sidewalk chalk to those teachers who wished to participate, and all entries had to be submitted as a group or classroom. Overall, 34 classrooms participated from 7 different schools in the county.

For America Recycles Day, the DCRC celebrated by having free giveaways in the Drive-Thru for the week leading up to the holiday. On America Recycles Day, the DCRC waived the fees for TV and freon appliance recycling.

AWARDS & GRANTS

2024 GOVERNOR'S AWARD FOR ENVIRONMENTAL EXCELLENCE

In September, the Indiana Department of Environmental Management (IDEM) awarded the 2024 Governor's Awards for Environmental Excellence to seven recipients during the Indiana Partners for Sustainability's Annual Conference and Tradeshow in Indianapolis. The DCRC received an award for the category of Recycling and Reuse.

The Governor's Awards for Environmental Excellence are Indiana's most prestigious environmental recognition awards. They are reserved for the most innovative, sustainable, and exemplary programs or projects that positively impact Indiana's environment and demonstrate measurable environmental, economic, and social benefits. The selection process is highly competitive.

The DCRC received the award for its robust group of reuse programs, including a reuse center for school and craft supplies, a formal dress exchange, a costume exchange, an event décor lending program, and a holiday item giveaway. The purpose of all of the reuse programs is to divert reusable materials from disposal in landfills while, at the same time, supplying residents with valuable, needed items. The programs help educators in Dearborn County save money on classroom items and provide a place for educators to donate items they no longer need. Meanwhile, local families save money on events and give single-use items, such as costumes, a second life.



IDEM COMMUNITY RECYCLING GRANT

The DCRC was a 2023 recipient of the Indiana Department of Environmental Management Community Recycling Grant. The grant money was used to purchase two new comingled recycling drop-off trailers, additional bins for the trailers, and a new forklift for processing the materials. The funding for the grant was received in the spring of 2024. The trailers arrived in September, and were put into rotation with the trailers at the DCRC 14 drop-off recycling locations. The forklift arrived in July. The total award for the grant was \$68,667.00 with a DCRC match of \$23,334.00.

THE CARTON COUNCIL EDUCATION AWARD

The DCRC was a 2023 recipient of The Carton Council Education Award. The award was designed to incentivize greater resident education surrounding recycling, with a focus on food and beverage carton recycling. The DCRC was awarded \$5,000 for outstanding implementation of communication efforts to promote carton recycling. The funds were awarded in early 2024, and were used to purchase items to help with recycling outreach and promote recycling.

FINANCIAL REPORT

DEARBORN
COUNTY SOLID
WASTE
MANAGEMENT
DISTRICT
BUDGET



Line Item	Description	2024 Budget
<i>Category: Personnel Services</i>		
100	Salaried	\$177,000
110	Hourly Full-Time	\$211,000
111	Hourly Part-Time	\$175,000
171	FICA	\$44,000
172	PERF	\$44,000
174	SUTA	\$3,000
182	Advisory Per Diem	\$1,500
Total		\$655,500
<i>Category: Supplies</i>		
211	Office Supplies	\$6,500
213	Reuse Center Supplies	\$2,500
221	Processing Supplies	\$8,000
231	Equipment Expense	\$6,000
232	Fuel Expense	\$51,000
241	Safety Supplies	\$5,000
242	Janitorial & Property Supplies	\$3,000
Total		\$82,000
<i>Category: Other Services and Charges</i>		
312	Professional Services	\$15,000
321	Travel	\$1,000
322	Conference & Training	\$3,500
324	Subscriptions & Dues	\$1,500
332	Printing	\$3,000
333	Advertising	\$20,000
334	Promotions	\$5,500
341	Insurance	\$36,000
350	Utilities	\$35,000
351	Communications	\$7,000
362	Equipment repairs & maintenance	\$40,000
381	Property Loan	\$0
390	Education	\$2,000
391	Education Partnerships	\$1,000
392	Recycling Programs	\$2,000
393	Uniforms	\$2,000
394	HHW Disposal	\$65,000
395	Non-Hazardous Disposal	\$65,000
Total		\$304,500
<i>Category: Capital Outlays</i>		
431	Property Improvements	\$15,000
444	Processing Center Equipment	\$15,000
450	Machinery: Equipment and Vehicles	\$65,000
Total		\$95,000
Grand Total		\$1,137,000



THE PEOPLE OF DCSWMD

2024 PERSONNEL

Director	David Hogg
Educator/Outreach Coordinator	Stefanie Hoffmeier
Reuse Coordinator/Office Assistant	Julie Robinson
Operations Manager	David Craig
Assistant Operations Manager	Randy Stenger
Residential Trailer Driver	Mike Teaney
Commercial/School Collection	Ross Cutter Randy Bath Terry Black
Forklift Operator	Don Shelton
Driver/HHW Back-up	Randy Robinson
Drive Thru Attendants	Clinton Burlage Joe Grote Vince Moore
Processing	Elmer Campbell Steve Black Joe Dittmer Ken Mosmeier Dick Gordon



EXECUTIVE BOARD

Rick Probst	County Commissioner, Board President
Vince Karstetter	Mayor of Greendale
Tim Doll	Representative, County Council
Jim Thatcher	County Commissioner
Kelly Mollaun	Mayor of Lawrenceburg
Bryan Messmore	City Coordinator, Lawrenceburg
Allen Goodman	County Commissioner (<i>replaced Art Little</i>)
Doug Garner	Pillar Law Group, Board Attorney



CITIZENS ADVISORY COMMITTEE

Bernadine Ickenroth	Nancy Lillie
Deb Crosby	Michelle Murray
Linda Johnson	Alan Weiss
Debbie South	



dearborncountyrecycles.com

10700 Prospect Ln. | Aurora, IN 47001 | 812.926.9963

