
REDUCE
REUSE
RECYCLE

2023 ANNUAL REPORT



dearborncountycycles.com

ABOUT US

The Dearborn County Solid Waste Management District, also known as the Dearborn County Recycling Center or DCRC, is located in Aurora, Indiana. This facility serves as the operation's hub for recycling collection, as well as holds the Drive-Thru, Household Hazardous Waste collection, and Creation Station, which includes Costume Swap, ReProm, and the Lending Station. From this hub, fourteen 24/7 recycling drop-off locations around Dearborn County are serviced, as well as recycling collection from 17 schools and close to 200 small businesses in the county.

2023 marked the DCRC's 30th year as a solid waste district and 19 years as a collection and processing facility for recycling. It continues to be the only entity within Dearborn County that accepts televisions for recycling, as well as the only collection point for household hazardous waste.

Our efforts are continually focused on reducing the amount of waste being sent to landfills through reduction, reuse, and recycling programs.



MISSION

The mission of the Dearborn County Solid Waste Management District is to foster a sense of responsibility and inspire action by Dearborn County residents to reduce solid waste by creating an awareness and commitment to reduction, reuse, and recycling programs.

CONTACT US



10700 Prospect Lane
Aurora, IN 47001



(812) 926-9963
(812) 926-9668 fax



Office Hours:
Monday – Friday: 8am – 4pm

Drive-Thru Hours:
Monday – Friday: 9am – 4pm
Wednesdays: 9am – 6pm



DearbornCountyRecycles.com



@DearbornCountyRecycles



@dcrecycles



dearborncountycycles

PROGRAMS & SERVICES

GENERAL RECYCLING PROGRAM

- Brown, white, and gray paper boxes and bags
- Glass bottles and jars
- Aluminum cans
- Steel/tin food containers and empty aerosols
- Cardboard boxes (flattened) and clean pizza boxes
- Newspaper, magazines, office paper, and envelopes
- Cartons and plastic bottles, jugs, and tubs

DRIVE-THRU SERVICE

- General recycling
- Document shredding
- Electronics (computers, monitors, phones, small kitchen appliances, etc.)
- Non-alkaline batteries
- Motor oil and filters
- Cooking oil
- Scrap metal
- Televisions
- Appliances
- Tires
- Latex paint

HOUSEHOLD HAZARDOUS WASTE COLLECTION

Including, but not limited to, household chemicals, oil-based paints and stains, cleaners, pesticides, herbicides, and flammable liquids

COMMERCIAL/SCHOOL RECYCLING

Program serves small businesses and schools throughout Dearborn County

EDUCATION PROGRAMS

Education and outreach programs on a variety of environmental issues provided to schools, youth, and other community organizations

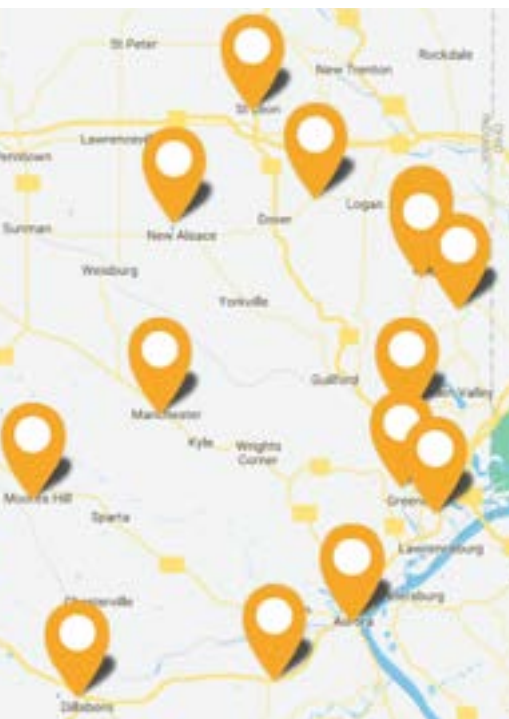
CREATION STATION

- Reuse center dedicated to the diversion of reusable materials from disposal in landfills to educators and non-profit groups in Dearborn County
- Featuring Costume Swap and ReProm, programs focusing on the reuse of gently worn Halloween costumes and formal dresses
- Lending Station allows individuals to borrow one-time use items for weddings, parties, and events
- Holiday Giveaway - donations of Christmas and other holiday items are collected throughout the year in the Recycling Center Drive-Thru and given out to the public in early December



RECYCLING LOCATIONS

The DCRC owns and operates 16 source-separated recycling trailers, with one or two trailers located at 14 of the sites listed below 24 hours a day, seven days a week. Plastics-only collection trailers are also available at 4 locations: the Aurora Rec Community Center, Lawrenceburg, North Dearborn, and Bright Meadows. In the fall of 2022, the DCRC added three additional cardboard-only collection containers to Aurora, North Dearborn, and Lawrenceburg. The DCRC has contracted with Rumpke Recycling to have a 36-yard commingled recycling container at the St. Leon location. Based on usage, the trailers are emptied on regularly scheduled days each week.



AURORA	The Heart House 6815 US 50
AURORA	Aurora Rec Community Center 404 Green Blvd.
BRIGHT	Bright Elementary School 22593 Stateline Rd
BRIGHT	Bright Meadows Park 2095 Einsel Rd
DILLSBORO	Behind the Fire Dept between Front St. & Western Row
GREENDALE	Behind Greendale Park Rand St.
LAWRENCEBURG	County Fairgrounds US 50
MANCHESTER	Manchester Ballfields St. Route 48 & County Farm Rd
MOORES HILL	Intersection of Manchester St. & College St.
NEW ALSACE	American Legion Post 452 25329 Legion Rd
N DEARBORN	Lot on Sawdon Ridge Rd 5678 N. Dearborn Rd
ST. LEON	St. Leon Fire Department 28870 St. Joe Dr.
STATE RT 1	Tanner Valley UM Church 19235 St Rt 1
YORKVILLE	Widolff's General Store 7981 Yorkridge Rd

Rumpke Recycling Container: no need to sort at St. Leon. Loose, mixed recyclables will be taken to the Rumpke Materials Recovery Facility in Cincinnati for sorting and recycling.



PLASTIC TRAILERS

- Aurora ARCC
- Bright Meadows
- Lawrenceburg
- North Dearborn



CARDBOARD TRAILERS

- Aurora ARCC
- Bright Meadows
- Lawrenceburg
- North Dearborn
- St. Leon



10700 Prospect Lane
Aurora, IN 47001



Monday-Friday
9am – 4pm
Wednesdays
9am – 6pm



RECYCLING CENTER DRIVE-THRU



TOTAL CUSTOMER REPORT

	JAN	FEB	MAR	APR	MAY	JUN	JUL	AUG	SEP	OCT	NOV	DEC	TOTAL 2023	TOTAL 2022	% CHANGE
Total Drive-Thru Visitors	444	457	516	473	555	572	528	552	454	492	446	498	5,987	5,703	5%
BREAKDOWN															
Antifreeze	0	5	6	11	7	10	6	5	1	6	3	4	64	65	-2%
Batteries (auto)	1	6	4	3	1	6	5	2	3	1	2	5	39	41	-5%
Batteries (household)	32	23	33	20	28	18	29	33	27	30	20	14	307	332	-8%
Computers	7	4	9	13	9	7	6	10	3	5	6	8	87	210	-59%
Document Shredding	24	42	39	28	23	25	32	39	23	29	30	22	356	302	18%
Flourescent Lamps	11	5	8	9	3	8	8	7	2	3	2	3	69	115	-40%
Freon Appliances	5	8	13	12	14	27	14	21	17	27	18	11	187	188	-1%
General Recycling	287	312	314	260	365	371	347	346	293	330	310	343	3,878	3289	18%
HHW walk-in	26	28	51	53	53	64	64	39	36	32	29	23	498	306	63%
Ink Cartridges	6	8	8	2	4	3	2	2	5	9	0	4	53	68	-22%
Motor Oil	18	23	31	47	52	43	39	30	49	34	15	29	410	386	6%
Oil Filters	3	5	8	18	9	9	5	5	5	4	2	9	82	59	39%
Other Electronics	5	8	10	12	8	8	13	9	5	4	5	8	95	326	-71%
Printers	2	6	11	7	6	6	8	8	6	3	3	8	74	137	-46%
Reuse Donation	34	34	31	29	35	42	45	48	27	33	42	59	459	553	-17%
Scrap Metal	28	28	47	34	47	49	59	48	47	47	42	29	505	462	9%
Tires	12	15	17	21	29	26	17	20	24	20	28	16	245	299	-18%
TVs	28	29	36	40	30	35	34	27	22	30	27	35	373	366	2%
Water Based Paint	19	19	17	23	28	25	34	32	33	27	13	21	291	299	-3%

GENERAL RECYCLING



COMMODITY/ GENERAL	JAN	FEB	MAR	APR	MAY	JUN	JUL	AUG	SEP	OCT	NOV	DEC	TOTAL 2023	TOTAL 2022
Aluminum (UBC)													0	20,831
Cardboard (OCC)	134,168	97,209	98,046	106,562	123,549	98,378	129,530	101,494	100,454	98,669	64,635	100,332	1,253,026	1,308,881
Glass	30,200		24,660		25,440		26,620		26,100		23,060		156,080	117,780
Mixed Paper (OMP)	40,052	25,632	31,472	24,958	37,587	30,203	28,080	25,582	29,093	28,934	21,477	24,237	347,307	379,973
Shredding event											7,500		7,500	3,880
40 yard on-site					3,940								3,940	23,020
Compactor Receiver*	46,140	30,660	40,740	42,980	53,100	52,320	43,780	42,440	50,000	44,200	54,480	41,380	542,220	580,980
Commingled - St. Leon	13,020	7,020	8,760	13,460	11,560	12,980	10,020	13,580	11,820	12,260	11,040	17,900	143,420	145,880
COMMODITY/ NUISANCE														
Scrap Copper & Aluminum		22			46	715	753		23	32			1,591	1,001
Christmas lights	1052					425							1,477	0
Scrap Metal		3800	4,300	4,980		4,500	6,040	42,000	4,060	4,040	5,340		79,060	44,380
Refrigerated units	1640	1208		3,096		2,355		2,595	3,549		4,597	3,695	22,735	12,175
Hard Cover Books		3623	2402	1,422								945	8,392	78,620
Tires	5,460	4,650	6,590	4,380	4,930	7,565	5,660	10,600	6,570	6,020	8,569	1000	71,994	109,660
Batteries (alkaline)				1,418					500			1,147	3,065	1,093
Televisions	3,820	4,569		3,376		5,072		3,576	3,423		1,054	5,191	30,081	23,563
Computers	947	1,717				978		678	60		1,088	456	5,924	4,315
Electronics	2,066	4,487		5,182		3,152		8,517	1,617		4,514	1,721	35,095	19,553
Total Pounds	280,119	184,597	216,970	212,294	260,152	219,188	250,483	251,062	238,529	194,155	207,354	198,004	2,712,907	2,875,620
General Items Total (Tons)	131.8	80.3	101.8	94.0	127.6	96.9	119.0	91.5	108.7	92.0	91.1	91.9	1,226.7	1,332.0
Nuisance Items Total (Tons)	8.3	12.0	6.6	12.2	2.5	12.7	6.2	34.0	10.5	5.0	12.6	7.1	129.7	147.2
HHW Total (Tons)	1.0	2.6	1.2	4.2	3.5	2.9	7.0	1.4	5	0.0	1.3	6.1	36	48.4
Total Tons	141.1	94.9	109.6	110.4	133.6	112.5	132.2	126.9	124.2	97	105	105.1	1,392.4	1,479.2

*Compactor receiver includes steel food cans, cartons, plastic bottles, jugs, and tubs.



MATTHEW 25 MINISTRIES



The Dearborn County Recycling Center donates the latex paint collected in the Drive-Thru to Matthew 25 Ministries. The paint is rebled and shipped to communities affected by disasters like hurricanes, floods, and tornadoes.

PALLETS OF PAINT COLLECTED	LANDFILL COST SAVINGS	POUNDS OF PAINT REPURPOSED
13	\$1,294	13,373

WASTE VS. RECYCLING

DEARBORN COUNTY WASTE 2023

		Waste (tons)
Rumpke	Hidden Valley Lake	2,049.70
	Dillsboro	613.91
	Rest of Dearborn County	12,545.33
Best Way	City of Greendale	1,924.51
	City of Lawrenceburg*	5,77.90
	Rest of Dearborn County*	13,000.00
Total		35,911.35

*These are estimates. No data available from Best Way.

DEARBORN COUNTY RECYCLING 2023

		Waste (tons)
Dearborn County	Recyclables & Nuisance	1,356.50
	Household Hazardous Waste	36.00
Rumpke	City of Greendale	275.60
	Hidden Valley Lake	335.85
	City of Lawrenceburg	399.02
	Town of Dillsboro	29.62
	Commercial Recycling	264.49
Total		2,697.13

Two waste haulers, Best Way and Rumpke, offer private trash hauling services in Dearborn County.

Greendale and Lawrenceburg have their own sanitation departments and haul waste for their respective cities; both haul their waste to the Best Way Transfer Station in Greendale.

Greendale offers single-stream curbside recycling to its residents and Lawrenceburg offers corrugated cardboard collection to its businesses and curbside recycling to its residents. Both haul their materials to Rumpke in Cincinnati for processing.

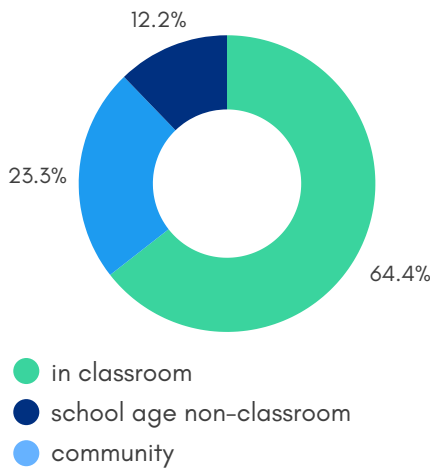
The diversion rate is the percentage of waste diverted away from landfills. The weights of all recyclables are not captured in the table to the left due to limitations of data collection from private industry. Dearborn County's diversion rate remains at 8% for 2023.





EDUCATION PROGRAMS

2023 Sessions



Programs in 2023 consisted of both a traditional classroom setting, as well as programs held with groups such as the Boy Scouts. Advertising via social media and local newspaper outlets continued to be a great outlet for community and adult education.

Overall, 5,548 students and 1,700 adults participated in the DCRC's education and outreach programs.

Classroom sessions are always higher than other types of sessions because there are almost always multiple sessions for each day spent at a school.

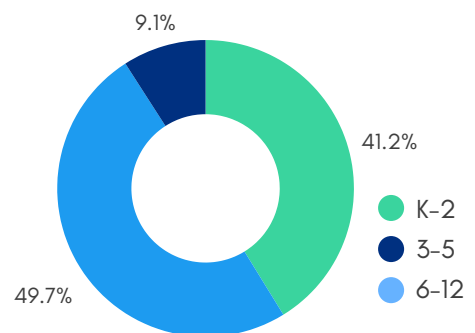
The Program Sessions by Title table to the left shows how many sessions of each program were completed. Paper Recycling was the most popular program partially due to it being presented in several all-day school events. Worm Composting was also very popular since it was used for the Ag Days event, serving all county third graders.

PROGRAM SESSIONS

PROGRAM	SESSIONS
Paper Recycling	64
Worm Composting	46
Edible Landfill	21
Litterbugs	7
3Rs	5
Compost Stew	3
DCRC Tour	2
How Do They Do That	2
Renewable Is Doable	2
E-Waste	1
Freddy Fish	1

Program sessions for Kindergarten through 2nd grade made up 32% of the total while 3rd through 5th was 51% and 6th through 12th accounted for 17%.

YOUTH PROGRAMS BY GRADE LEVEL





OUTREACH PROGRAMS

The table to the right shows Outreach efforts in 2023.

The DCRC was invited to have a booth at the CASA Youth Summit. All eighth-grade students in Dearborn County, including public and private schools, were invited to attend. Students were educated on alcohol, drugs, vaping, decision-making, and other topics affecting teenagers.

In April, the DCRC's Drive-Thru was open on Saturday, April 22, for an Earth Day Event. Besides collecting recyclables from residents, the Dearborn County Health Department was on site to provide health screenings, and the Dearborn County Sheriff's Department was on site to collect and dispose of medications.

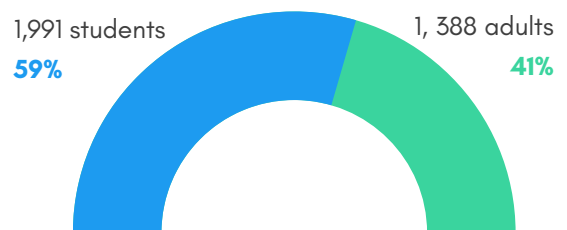
The Dearborn County 4-H and Community Fair is always time well-spent out and about in the community, meeting with residents as well as people from the surrounding communities. The Fair was the third week in June and was open Monday through Friday evenings. The DCRC had a total of 750 visitors over the five days, with 403 students, and 347 adults.

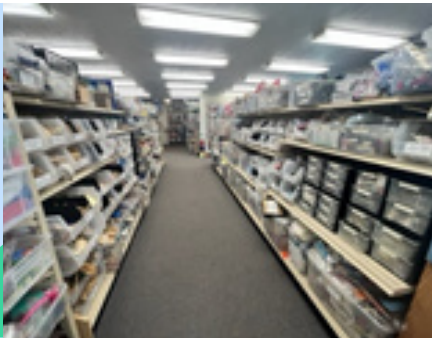
For America Recycles Day, the DCRC and Ross & Squibb Distillery teamed up for an Electronics Collection and Shred Event. It was held in Greendale at Ross & Squibb. The City of Greendale sponsored the shred truck for the event. Two hundred and eight customers were served at this remote location where 7,458 pounds of electronics were collected and 7,500 pounds of files were shredded.

OUTREACH EVENTS

EVENT	PEOPLE REACHED
CASA Youth Summit	735
ECMS Give Back Day	47
SEIOC Head Start	5
DCRC-Earth Day Event	40
Library Kindness Event	43
DC 4-H Fair	750
Lawrenceburg Farmer's Market	78
Aurora Dine & Dive Lunch	64
Greendale Night Out	200
Lburg Farmers Market	125
Matthews Aurora	25
DC Childrens Services Trunk-or-Treat	262
Halloween Sensation	688
PAWS Halloween	110
Electronics Collection Event	208

OUTREACH AUDIENCE





REUSE PROGRAMS

REUSE SERVICES USED

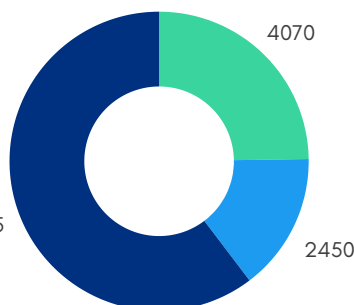
	2023	2022	% CHANGE
Reuse Donation	459	533	-17%
Costume Swap	1,168	1,158	1%
ReProm	623	614	1%
Creation Station	381	359	6%
Teacher Deliveries	569	503	13%
Holiday Giveaway	400	310	29%

SCHOOL DELIVERY PROGRAM

The School Delivery Program has just completed its 7th year. This program was put in place to help teachers and staff that are unable to visit Creation Station during open hours. Deliveries are made to teachers in up to 16 different Dearborn County schools once a month during the school year based on e-mail requests. 569 teacher deliveries were made in 2023 to 16 schools totaling 2,450 lbs. during the months that school was in session.

POUNDS SAVED FROM THE LANDFILL

- Holiday Giveaway
- Creation Station 9915
- Teacher Deliveries



CREATION STATION

Creation Station is Dearborn County's reuse center and one of the greatest local resources for non-profit organizations. Generous donations from both Dearborn County individuals and businesses help make this program successful. Creation Station has a large assortment of office, educational, school, and craft supplies to offer teachers, church leaders, 4-H leaders, Scout leaders, and other non-profit groups. Creation Station has saved many teachers and non-profit organizations a lot of money over the years. Creation Station is open on Wednesdays from 1-6 pm. There were 381 customers in 2023 and 9,915 pounds of material disbursed, not including deliveries from Creation Station to the teachers previously discussed. Since 2004, the Creation Station has diverted close to 79 tons of material from the landfill.

LENDING STATION

Lending Station is a great program for people who are having big events such as weddings, graduation parties, showers and other like events. Items such as glassware, table coverings, and decorations in multiple quantities are loaned out free of charge. Using the Lending Station is a great way to save a lot of money on a special event. Like the Creation Station, this program is made possible with donations from the community. Lending Station was used for 36 different events in 2023. The inventory can be found on our website at dearborncountycycles.com.



REPROM

ReProm is the District's formal dress exchange program. 2023 marked its eleventh year as this program started in 2013 with twelve dresses. There are now around 1,200 dresses that can be worn for any formal occasion or event, with the most popular event being prom. Many girls purchase a dress and wear it one time. This exchange program allows them to bring in a dress that they do not plan on wearing again and swap it out for one that someone else has exchanged or donated. This program saves families money as it cuts down on the expense of the prom and circulates dresses that would just hang in a closet for years before possibly ending up in a landfill. ReProm is open all year on Wednesdays from 1-6 pm with special dates and times around prom time.

Visits to eleven area high schools with sample dresses and information concerning special hours for ReProm were made during lunch times in February. Appointments were required during prom season. Girls who did not have a dress to exchange gave a donation. In 2023 a total of \$2,108 was received in donations for dresses. These donations are used to purchase dresses on sale to replace the dresses that were taken in order to keep a good inventory of all sizes. There are also a lot of dresses directly donated to ReProm from people in the community who have dresses they no longer need. ReProm had 623 visitors with 375 of those actually shopping for a dress. 345 dresses were exchanged in 2023 which is a 92% success rate.

COSTUME SWAP

Costume Swap was open 12 days in October and proved to be the biggest year yet with a total of 1,168 customers. Costume Swap offers over 1000 costumes, lots of makeup, accessories, and Halloween decorations. Customers who did not have a costume to exchange gave a donation. A total of \$1,888 was given in donations for costumes in 2023. This money is used to buy new costumes at clearance prices to help restock Costume Swap.



HOLIDAY GIVEAWAY

2023 was the District's fifth Holiday Giveaway and was held one day, Saturday, December 2nd. Thanks to the help of several volunteers and employees, the warehouse was turned into a holiday wonderland full of decorations, lights, trees, ornaments, and much more. There were 400 happy customers that took holiday and craft supplies home totaling approximately 4,070 pounds including 40 Christmas trees. Holiday items were collected in the Drive-Thru throughout the year and stored on skids in the Warehouse loft. The Holiday Giveaway allowed many individuals and non-profit organizations to get holiday decorations that would have otherwise ended up in the landfill.

PROPERTY IMPROVEMENTS

DCRC employees Steve Black and Joe Dittmer cleared the fence row on the west side of the property. Trees and brush must be cleared from fence rows periodically before they damage the fence line.

Trees and a fence row were removed on the south side of the DCRC's property by DCRC employees. Removal of the fence row and trees opened up the property to allow easier mowing and easier movement of trucks and trailers on the property.

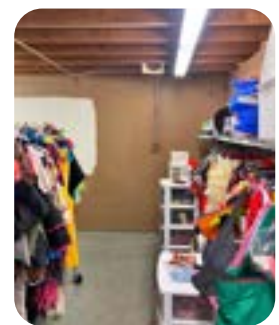


Overhead lighting was upgraded to LED through a program with Duke Energy in the Processing building and the Drive Thru.

The conveyor for the baler dedicated to cardboard in Processing had to be replaced in 2023. The baler was purchased in 2013 through a grant from the Dearborn Community Foundation.

DCRC employees improved the Halloween Costume Swap room with new paint and wall racks.

A 40' x 80' section of asphalt was installed outside the west Processing door to help cut down on dirt and dust blown and driven into the building.



DONATION EVENT

FILL THE VAN EVENT

In partnership with Walmart, the DCRC Creation Station spent Saturday, July 30, at Walmart to collect donations of school supplies for the teachers of Dearborn County. Teachers spend their own money to decorate and buy extra supplies for their classrooms. Even though parents send in school supplies in August, many items like markers and glue sticks are used up by

the holidays. The Creation Station provides supplies to teachers FREE of charge. All items in the Creation Station are donated by the public and businesses. Thanks to generous shoppers, Creation Station was able to collect 300 lbs of school supplies at Walmart. All of the donated items were given to teachers in Dearborn County Schools.



EMPLOYEE MILESTONES

13

YEARS

Elmer Campbell

Processing Employee
13 years June 22

Steve Black

Processing Employee
13 years November 2

Joe Dittmer

Processing Employee
12 years January 6

Mike Teaney

Residential Trailer Driver
12 years September 6

Sandy Whitehead

Director
8 years November 4
(plus 3 years as Educator)

Ross Cutter

Commercial Driver
8 years August 4

Julie Robinson

Reuse Coordinator
8 years October 27

7

YEARS

David Craig

Operations Manager
7 years February 1

Don Shelton

Forklift Operator
7 years October 13

6

YEARS

Randy Bath

Commercial Driver
6 years March 2

Randy Robinson

Driver/HHW Back-up
6 years December 19

5

YEARS

Terry Black

Commercial Driver
5 years February 20

Clinton Burlage

Drive-Thru Attendant
5 years April 19

FINANCIAL REPORT

DEARBORN
COUNTY
SOLID WASTE
MANAGEMENT
DISTRICT
BUDGET



Line Item	Description	2023 Budget
<i>Category: Personnel Services</i>		
100	Salaried	\$127,500
110	Hourly Full-Time	\$232,000
111	Hourly Part-Time	\$175,000
171	FICA	\$39,000
172	PERF	\$40,000
174	SUTA	\$3,000
182	Advisory Per Diem	\$1,500
Total		\$618,000
<i>Category: Supplies</i>		
211	Office Supplies	\$6,500
213	Reuse Center Supplies	\$4,500
221	Processing Supplies	\$8,000
231	Equipment Expense	\$4,000
232	Fuel Expense	\$35,000
241	Safety Supplies	\$3,000
242	Janitorial & Property Supplies	\$3,000
Total		\$64,000
<i>Category: Other Services and Charges</i>		
312	Professional Services	\$12,000
321	Travel	\$1,000
322	Conference & Training	\$2,500
324	Subscriptions & Dues	\$1,200
332	Printing	\$3,000
333	Advertising	\$22,000
334	Promotions	\$3,500
341	Insurance	\$34,000
350	Utilities	\$28,000
351	Communications	\$6,000
362	Equipment repairs & maintenance	\$35,000
381	Property Loan	\$34,000
390	Education	\$2,000
391	Education Partnerships	\$1,000
392	Recycling Programs	\$5,000
393	Uniforms	\$1,800
394	HHW Disposal	\$35,000
395	Non-Hazardous Disposal	\$65,000
Total		\$292,000
<i>Category: Capital Outlays</i>		
431	Property Improvements	\$30,000
444	Processing Center Equipment	\$8,000
450	Machinery: Equipment and Vehicles	\$25,000
Total		\$63,000
Grand Total		\$1,037,000

THE PEOPLE OF DCSWMD

2023 PERSONNEL

Director	Sandy Whitehead
Educator/Outreach Coordinator	Stefanie Hoffmeier
Reuse Coordinator/Office Assistant	Julie Robinson
Operations Manager	David Craig
Assistant Operations Manager	Randy Stenger
Drive Thru Supervisor/ HHW	David Hogg
Residential Trailer Driver	Mike Teaney
Commercial/School Collection	Ross Cutter Randy Bath Terry Black
Forklift Operator	Don Shelton
Driver/HHW Back-up	Randy Robinson
Drive Thru Attendants	Clinton Burlage Vince Moore
Processing	Elmer Campbell Steve Black Joe Dittmer Ken Mosmeier Bob Gorman Ron Slayback



EXECUTIVE BOARD

Alan Weiss	Mayor of Greendale, Board President
Art Little	County Commissioner, Board Secretary
Rick Probst	County Commissioner
Tim Doll	Representative, County Council
Jim Thatcher	County Commissioner
Kelly Mollaun	Mayor of Lawrenceburg
Bryan Messmore	City Coordinator, Lawrenceburg
Allen Goodman	County Commissioner (<i>replaced Art Little</i>)
Doug Garner	Pillar Law Group, Board Attorney



CITIZENS ADVISORY COMMITTEE

Bernadine Ickenroth	Linda Chastang
Deb Crosby	Amy Deaton
Linda Johnson	Nancy Lillie
Debbie South	

10700 Prospect Ln.
Aurora, IN 47001
812.926.9963



dearborncountyrecycles.com

