

REDUCE
REUSE
RECYCLE



2025

Annual Report

dearborncountycycles.com



ABOUT US

The Dearborn County Solid Waste Management District—also known as the Dearborn County Recycling Center (DCRC)—is located in Aurora, Indiana. The facility serves as the central hub for the county's recycling operations and houses several key services, including the Drive-Thru Recycling Center, the Household Hazardous Waste Collection Program, and the Creation Station. The Creation Station offers multiple community resources, such as the Costume Swap, ReProm, and the Lending Station. From this main location, the DCRC services fourteen 24/7 recycling drop-off sites throughout Dearborn County, along with recycling collection for sixteen local schools.

In 2025, the DCRC celebrated 32 years as an established solid waste management district and 21 years as an active recycling collection and processing facility. It remains the only entity in Dearborn County that accepts televisions for recycling, as well as the county's exclusive collection point for household hazardous waste.

The DCRC remains committed to reducing the amount of waste sent to landfills by strengthening and expanding programs that emphasize waste reduction, reuse, and recycling.



MISSION

The mission of the Dearborn County Solid Waste Management District is to foster a sense of responsibility and inspire action by Dearborn County residents to reduce solid waste by creating an awareness and commitment to reduction, reuse, and recycling programs.

CONTACT US



10700 Prospect Lane
Aurora, IN 47001



(812) 926-9963
(812) 926-9668 fax



Office Hours:
Monday – Friday: 8am – 4pm

Drive-Thru Hours:
Monday – Friday: 9am – 4pm
Wednesdays: 9am – 6pm



DearbornCountyRecycles.com



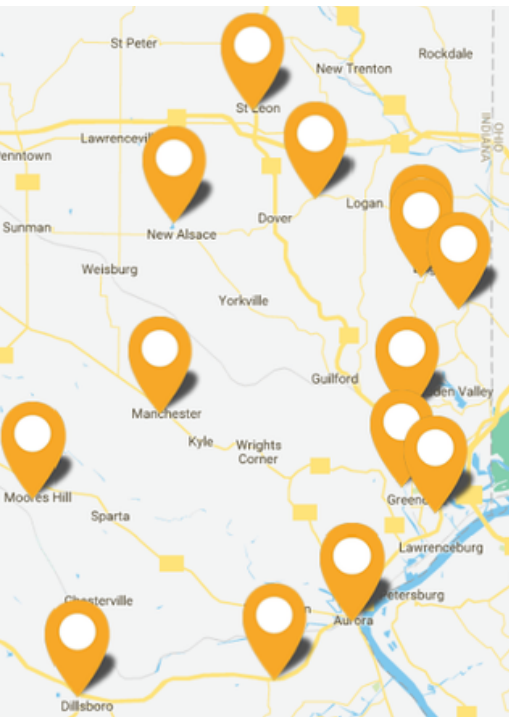
@DearbornCountyRecycles



dearborncountyrecycles

RECYCLING LOCATIONS

The DCRC owns and operates 14 source-separated recycling trailers, with one or two trailers located at 14 of the sites listed below 24 hours a day, seven days a week. Plastics-only collection trailers are also available at 5 locations: Aurora ARCC Ball Fields, Lawrenceburg, North Dearborn, St. Leon, and Bright Meadows. The DCRC has five additional cardboard-only collection containers for Aurora, Bright Meadows, Lawrenceburg, North Dearborn, and St. Leon.



AURORA	The Heart House 6815 US 50
AURORA	ARCC Ball Fields 366 Moore St.
BRIGHT	Bright Elementary School 22593 Stateline Rd
BRIGHT	Bright Meadows Park 2095 Einsel Rd
DILLSBORO	Behind the Town Hall Executive Dr and US 50
GREENDALE	Behind Greendale Park Rand St.
LAWRENCEBURG	County Fairgrounds US 50
MANCHESTER	Manchester Ballfields St. Route 48 & County Farm Rd
MOORES HILL	Intersection of Manchester St. & College St.
NEW ALSACE	American Legion Post 452 25329 Legion Rd
N DEARBORN	North Dearborn Community Park 5678 N. Dearborn Rd
ST. LEON	St. Leon Fire Department 28870 St. Joe Dr.
STATE RT 1	Tanner Valley UM Church 19235 St Rt 1
YORKVILLE	Widolff's General Store 7981 Yorkkridge Rd



PLASTIC TRAILERS

Aurora ARCC Ball Fields

Bright Meadows

Lawrenceburg

North Dearborn

St. Leon



CARDBOARD TRAILERS

Aurora ARCC Ball Fields

Bright Meadows

Lawrenceburg

North Dearborn

St. Leon

GENERAL RECYCLING SERVICES



The DCRC accepts these materials at 14 drop-off locations in Dearborn County, as well as in the Drive-Thru. Recyclables must be sorted by type for drop off at all locations.

SORT SEPARATELY

CARDBOARD

Paperboard and brown boxes. Remove food debris and paper/bag liners.



ALUMINUM CANS & BOTTLES

Remove caps on aluminum bottles.



MIXED PAPER

Office paper, newspaper, magazines, junk mail, and envelopes.



COMMINGLE TOGETHER

GLASS BOTTLES & JARS

Any color. Remove metal lids and place both in bin.



METAL CANS

Non-hazardous, non-flammable material only. Remove lids and tips of aerosol cans.



CUPS

Fast food beverage cups, aluminum cups, and paper cups only. Remove straws. No colored party cups.



PLASTIC BOTTLES, JUGS, AND TUBS

Reattach lids. Yogurt and fruit cups OK.



CARTONS

Milk, juice, soup, broth, and wine cartons. Remove plastic caps and straws.



Cardboard, mixed paper, and aluminum cans are processed and baled at the DCRC. All co-mingled items are placed in a compactor receiver and sent to Rumpke Recycling in Cincinnati. Rumpke has state-of-the-art sorting equipment that can process the materials much faster and more efficiently than the DCRC.

DRIVE-THRU SERVICES

The DCRC Drive-Thru provides recycling services for nuisance waste, electronics, and HHW. The services are for Dearborn County residents only. The majority of items are free to recycle, except for televisions, tires, and freon appliances.

ITEMS ACCEPTED FREE OF CHARGE



- batteries - non-alkaline
- cooking oil
- electronics - computers, monitors, phones, small appliances, etc.
- fire extinguishers
- hardcover books
- mercury products - fluorescent bulbs, thermometers, etc.
- metal - various items and scrap
- motor oil and oil filters

ITEMS ACCEPTED WITH A FEE



- Freon Appliances
- Televisions
- Tires



PRESSURIZED CYLINDERS



The DCRC will only accept:

- BBQ grill propane tanks and smaller
- Fire extinguishers
- Oxygen tanks
- Freon
- Helium tanks
- Carbon dioxide (CO₂)

Donations for our Reuse Programs can be dropped off in the Drive-Thru. All items must be clean and in good condition. Donation items accepted for Creation Station, Lending Station, ReProm, Costume Swap, and the Holiday Giveaway. Additional items collected in the Drive-Thru include string lights and egg cartons.

HOUSEHOLD HAZARDOUS WASTE (HHW) DISPOSAL



Household Hazardous Waste (HHW) is any unusable or unwanted product found in your home, garage, shed or barn that can be hazardous to plants, animals, humans or the environment if it is not disposed of correctly. HHW should never be put in the trash, poured down the drain/on the ground, or burned.

Garden and Workshop

- Acetone
- Bug sprays
- Epoxy/adhesives
- Fertilizers
- Oil-based paints/stains
- Pesticides
- Pool chemicals
- Propane tanks
- Rodent poisons
- Thinners & strippers
- Water repellents
- Weed sprays

Garage and Auto

- Brake fluid
- Car paint & solvents
- Gasoline & kerosene
- Grease & degreasers
- Grout & caulk
- Mercury switches
- Propane cylinders
- Refrigerants
- Sealants
- Tar/sealers/solvents
- Transmission fluid
- Wax, polish, & cleaner

Kitchen and Bath

- Bleach
- Drain openers
- Furniture polish
- Oven cleaners
- Tub & tile cleaners

Personal Care

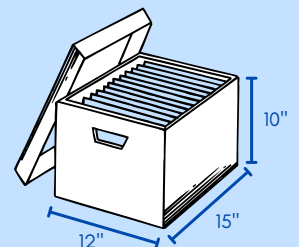
- Hair dyes
- Hair spray (aerosol)
- Nail polish
- Perfume
- Perm chemicals



DOCUMENT SHREDDING



- Tax forms
- Medical records
- Financial statements
- Maximum of 2 file-size boxes
- Please remove paper clips, binder clips, rubber bands, folders, and spiral binding
- Allow 20 minutes per box to observe



FINANCIAL REPORT

DEARBORN
COUNTY SOLID
WASTE
MANAGEMENT
DISTRICT
BUDGET



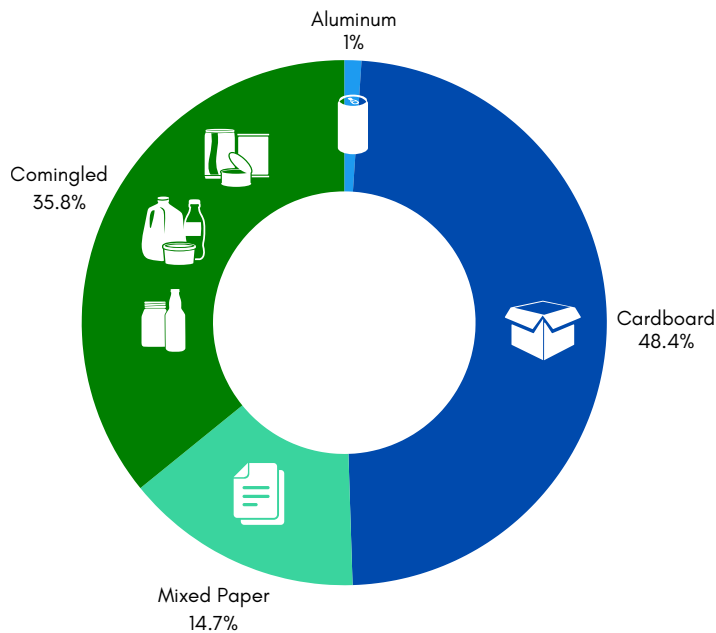
Line Item	Description	2025 Budget
<i>Category: Personnel Services</i>		
100	Salaried	\$171,000
110	Hourly Full-Time	\$214,000
111	Hourly Part-Time	\$180,000
171	FICA	\$45,000
172	PERF	\$44,000
174	SUTA	\$6,000
182	Advisory Per Diem	\$1,500
Total		\$661,500
<i>Category: Supplies</i>		
211	Office Supplies	\$6,600
213	Reuse Center Supplies	\$2,750
221	Processing Supplies	\$8,000
231	Equipment Expense	\$6,000
232	Fuel Expense	\$51,000
241	Safety Supplies	\$5,000
242	Janitorial & Property Supplies	\$3,200
Total		\$82,550
<i>Category: Other Services and Charges</i>		
312	Professional Services	\$15,000
321	Travel	\$1,100
322	Conference & Training	\$4,000
324	Subscriptions & Dues	\$1,600
327	Scholarships	\$1,500
332	Printing	\$3,200
333	Advertising	\$20,000
334	Promotions	\$5,500
341	Insurance	\$40,000
350	Utilities	\$36,000
351	Communications	\$7,000
362	Equipment repairs & maintenance	\$50,000
390	Education	\$2,200
391	Education Partnerships	\$1,200
392	Recycling Programs	\$2,000
393	Uniforms	\$2,200
394	HHW Disposal	\$65,000
395	Non-Hazardous Disposal	\$65,000
Total		\$322,500
<i>Category: Capital Outlays</i>		
431	Property Improvements	\$20,000
444	Processing Center Equipment	\$15,000
450	Machinery: Equipment and Vehicles	\$45,000
Total		\$80,000
Grand Total		\$1,146,550

RECYCLING BY THE NUMBERS



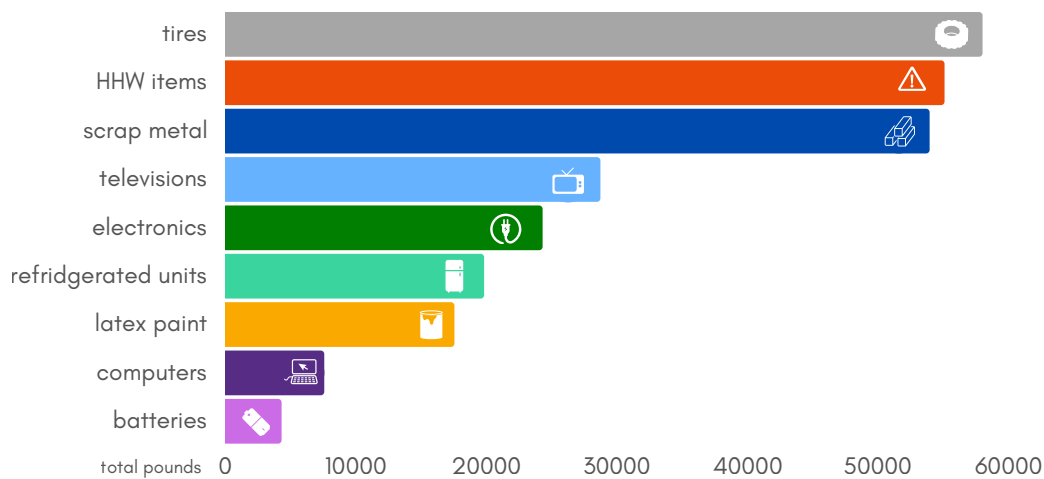
The numbers below represent the total number of general recyclables collected by the DCRC from commercial accounts, the 24/7 drop-off recycling trailer sites, and the Drive-Thru.

TOTAL GENERAL RECYCLABLES



- Aluminum cans and bottles
- Cardboard boxes, and brown, white, and gray paper boxes
- Newspaper, magazines, office paper, paper bags, and envelopes
- Glass bottles and jars
- Steel/tin food containers and empty aerosols
- Cartons and plastic bottles, jugs, tubs, and cups
- Hefty ReNew™ Bag program for styrofoam and hard-to-recycle plastics

TOTAL COMMODITY/NUISANCE WASTES





10700 Prospect Lane
Aurora, IN 47001



Monday-Friday

9am — 4pm

Wednesdays

9am — 6pm



RECYCLING CENTER DRIVE-THRU



The DCRC offers Drive-Thru recycling service for general recyclables, electronics, appliances, tires, batteries, household hazardous waste, scrap metal, and batteries. Residents can bring items to the Drive-Thru year-round. Most items are free of charge. The DCRC charges for televisions, tires, and freon appliances.

TOTAL CUSTOMER REPORT

	JAN	FEB	MAR	APR	MAY	JUN	JUL	AUG	SEP	OCT	NOV	DEC	TOTAL 2025	TOTAL 2024
Total Drive-Thru Visitors	438	461	608	482	499	451	613	550	543	597	442	444	6,128	6,298
BREAKDOWN														
Antifreeze	4	2	10	7	13	8	8	6	12	8	9	8	95	78
Batteries (auto)	2	1	2	2	2	2	2	3	12	3	5	6	42	43
Batteries (household)	28	23	26	15	24	26	30	34	17	37	22	40	322	317
Computers	2	3	3	3	3	0	4	1	3	2	3	2	29	58
Document Shredding	32	28	50	33	27	22	32	28	29	32	22	17	352	386
Flourescent Lamps	3	3	2	1	0	0	3	8	7	1	3	1	32	64
Freon Appliances	4	6	13	23	18	10	20	26	13	18	20	16	187	196
General Recycling	298	346	338	315	307	288	397	326	323	391	292	309	3,930	3,975
HHW walk-in	14	25	60	28	43	38	59	49	53	54	41	35	499	352
Ink Cartridges	3	5	9	2	6	5	2	1	3	4	1	10	51	40
Motor Oil	22	30	69	36	48	43	46	42	36	57	42	28	499	556
Oil Filters	2	2	18	9	14	4	5	3	1	5	5	12	80	89
Other Electronics	2	3	2	4	0	0	5	2	3	5	4	3	33	86
Printers	2	2	3	3	0	0	4	1	3	2	1	2	23	60
Reuse Donation	37	35	46	21	21	25	49	32	38	40	37	51	432	471
Scrap Metal	41	36	60	42	45	53	66	59	50	84	51	34	621	561
Tires	8	14	26	20	27	20	16	34	32	36	25	11	269	265
TVs	10	22	26	25	19	20	24	23	41	30	40	25	305	371
Water Based Paint	15	16	48	27	41	26	47	49	45	43	11	1	369	358

RECYCLABLES AND NUISANCE WASTES



COMMODITY/ GENERAL	JAN	FEB	MAR	APR	MAY	JUN	JUL	AUG	SEP	OCT	NOV	DEC	TOTAL 2025	TOTAL 2024
Aluminum (UBC)						20,820							20,820	20,880
Cardboard (OCC)	74,862	102,972	63,787	106,290	96,691	66,063	106,879	71,171	68,161	73,292	64,993	66,838	961,999	1,137,134
Glass	24,750		37,950			36,660			23,000				122,360	108,900
Mixed Paper (OMP)*	11,828	32,268	19,254	33,410	40,609	26,997	29,856	17,673	18,847	18,189	21,207	20,902	291,040	315,681
40 yard on-site	4,200				2,040			3,340			3,720		13,300	27,340
Compactor Receiver**	62,980	44,480	60,180	62,580	50,540	63,420	57,900	62,200	54,900	52,540	55,340	71,440	698,500	611,240
COMMODITY/ NUISANCE														
Christmas lights			500										500	362
Scrap Metal		5,340	4,180	5,300	4,880	5,420	5,420	5,800	5,080	5,020	4,060	3,440	53,940	39,700
Refrigerated units			1,853	2,204	142	3,802		3,078	3,687	2,217	2,812		19,795	17,739
Tires	1,930	1,790	6,605	3,770	5,111	3,977	5,117	4,590	9,328	2,990	2,490	10,300	57,998	62,034
Batteries (non-alkaline)	2,119									2,150			4,269	1,342
Televisions			4,465	4,606	4,705	3,288		3,250	2,489	2,869	3,056		28,708	30,977
Computers			1,898	1,016	1,355	671		680	7	1,897	18		7,542	4,813
Wire											829		829	1,703
Electronics			3,543	4,046	4,523	1,628		3,113	3,495	2,183	1,746		24,277	29,524
HHW/Commodity													0	60,008
Matthew 25	3129		2,250		3,608		3,608	2,679	2,244				17,518	8,525
Total Pounds	161,048	186,850	168,515	223,222	214,204	196,086	208,780	177,554	168,238	163,347	160,271	172,920	2,323,395	2,544,462
General Items Total (Tons)	76.9	89.9	71.6	101.1	94.9	88.7	97.3	77.2	71.0	72.0	72.6	79.6	1,054.0	1,143.9
Nuisance Items Total (Tons)	3.6	3.6	12.6	10.5	12.2	9.4	7.1	11.6	13.2	9.7	7.5	6.9	107.7	128.4
Total Tons	80.5	93.4	84.3	111.6	107.1	98.0	104.4	88.8	84.1	97.0	80.1	86.5	1,177.0	1,263.8

*Mixed paper now includes hard cover books, that were previously reported separately.

**Compactor receiver includes steel food cans, cartons, plastic bottles, jugs, and tubs.



MATTHEW 25 MINISTRIES



The Dearborn County Recycling Center donates the latex paint collected in the Drive-Thru to Matthew 25 Ministries. The paint is rebled and shipped to communities affected by hurricanes, floods, and tornadoes.

PALLETS OF PAINT COLLECTED	LANDFILL COST SAVINGS	POUNDS OF PAINT REPURPOSED
15	\$8,000	17,518

At the end of October 2025, Matthew 25 Ministries announced that they were discontinuing their paint recycling program.

HOUSEHOLD HAZARDOUS WASTE (HHW) RECYCLING/DISPOSAL



COMMODITY/ HHW	JAN	FEB	MAR	APR	MAY	JUN	JUL	AUG	SEP	OCT	NOV	DEC	TOTAL 2025	TOTAL 2024
Aerosols			426.0				975.0			1000.0			2,401	1,232.0
Aluminum paint							1153.0			3000.0			4,153	0.0
Asbestos													0	1.0
Auto batteries	763												763	3,319.0
Brake fluid													0	0.0
Compressed gases			19.0							400.0			419	40.0
Corrosive liquid, basic			209.0				459.0			800.0			1,468	954.0
Corrosive liquid, acidic			89.0				138.0			300.0			527	857.0
Corrosive solid										10.0			10	0.0
Flammable liquid			2236.0				2300.0			4500.0	500.0	500.0	10,036	4,165.0
Flammable solid			182.0										182	2.0
Ink jet cartridges													0	0.0
Freon			7.0				8.0						15	9.0
Cooking oil													0	0.0
Helium							4.0						4	0.0
Isocyanates													0	1.0
Liquid acids													0	0.0
Lithium batteries													0	0.0
Fire extinguishers			14.0				40.0			300.0			354	122.0
Fluorescent and incandescent bulbs									1755.0				1,755	5,369.0
Mercury													0	101.0
Non-hazardous liquids			203.0				754.0			1250.0		500.0	2,707	1,330.0
Non-hazardous solids										750.0			750	0.0
Non-regulated oil & grease										300.0			300	0.0
Oxidizing solid			1.0				109.0						110	174.0
Oxidizing liquid			182.0				121.0			500.0			803	382.0
Oil-based paint			1492.0				3122.0			3000.0	1250.0		8,864	8,184.0
Latex paint	3,129		2,250		3,608		3,608	2,679		5224	1250.0		21,768	8,525.0
PCB light ballast			335.0				654.0			1250.0	500.0		2,737	385.0
Pesticide liquids			99.0				336.0						435	1,498.0
Pesticide solids			94.0				130.0						224	1,164.0
Propane			1484.0				3364.0			1000.0			5,848	291.0
Putty and adhesives							141.0						141	2,693.0
Resin solution										1600.0			0	93.0
Refrigerant gases													0	0.0
Ni-CAD + NiMH													0	0.0
Anti-freeze						170.0			160.0	300.0			630	600.0
Used motor oil & filters	171	174.0	397.0	274.0	402.0	152.0	504.0	255	490.0	318.0	240.0	220.0	3,597	24,656.0
Polychlorinated biphenyls													0	0.0
Total Pounds	934	174.0	7467.0	274.0	402.0	322.0	14312.0	255.0	2405.0	23578.0	3740.0	1220.0	55,083	66,147
Total Tons	0.5	0.1	3.7	0.1	0.2	0.2	7.2	0.1	1.2	11.8	1.9	0.6	28	33

Months with blank spaces do not indicate that the DCRC did not collect those items during that month. The weights are calculated based on when the vendors, who the DCRC uses for recycling, pick up the items from the DCRC.

WASTE VS. RECYCLING

DEARBORN COUNTY WASTE 2025

		Waste (tons)
Rumpke	Hidden Valley Lake	2,073.56
	Dillsboro	431.94
	Rest of Dearborn County	7,910.09
Best Way	City of Greendale	2,041.56
	City of Lawrenceburg*	6,104.26
	Rest of Dearborn County*	14,250.09
Total		32,811.50

*These are estimates. No data available from Best Way.

DEARBORN COUNTY RECYCLING 2025

		Waste (tons)
Dearborn County	Recyclables & Nuisance	1,177.00
	Household Hazardous Waste	28.00
Rumpke	Bright, Miller Township	22.48
	Hidden Valley Lake	292.75
	City of Lawrenceburg	175.66
	Town of Dillsboro	25.40
	Commercial Recycling	349.25
Total		2,070.54

Two private waste haulers—Best Way and Rumpke—provide trash collection services within Dearborn County. The cities of Greendale and Lawrenceburg operate their own sanitation departments, managing waste collection for their respective communities. Both municipalities transport their collected waste to the Best Way Transfer Station in Greendale.

Greendale offers single-stream curbside recycling to its residents, while Lawrenceburg provides corrugated cardboard collection for local businesses in addition to curbside recycling for residents. All recyclable materials collected through these programs are hauled to Rumpke’s Cincinnati facility for processing.

The diversion rate represents the percentage of waste redirected away from landfills. Due to data-collection limitations within the private sector, not all recyclable material weights are reflected in the table referenced to the left. For 2025, Dearborn County’s diversion rate remains at 6.4%.





When recycling isn't an option, reusing is a great way to reduce waste. The purpose of these programs is to divert reusable materials from disposal in landfills, while at the same time supplying residents with valuable materials.

REUSE PROGRAMS



REUSE SERVICES USED

	CUSTOMERS
Reuse Donation	432
Costume Swap	921
ReProm	564
Creation Station	310
Teacher Deliveries	331
Holiday Giveaway	550

TEACHER DELIVERIES

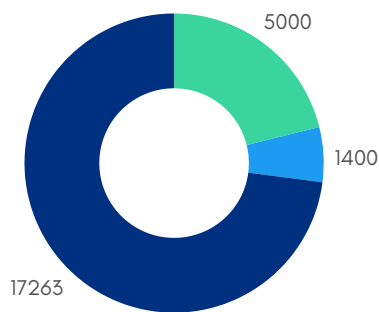
The school delivery program was put in place to help teachers and staff who are unable to visit Creation Station during regular hours. Deliveries are made to teachers in up to 16 different Dearborn County schools every other month during the school year based on e-mail requests.

LENDING STATION

Lending Station allows individuals to borrow items for special events, weddings, and parties at no cost. Besides the traditional glassware and party supplies, Cricut machines are also available for use. Lending Station is open to the public, not just non-profit organizations.

POUNDS SAVED FROM THE LANDFILL

- Holiday Giveaway
- Creation Station
- Teacher Deliveries



REPROM DRESS EXCHANGE

ReProm is a formal and semi-formal dress exchange program. It is open to everyone. There are over 1000 semi-formal and formal dresses available.

CREATION STATION

Creation Station is a not-for-profit reuse center. Any not-for-profit adult educator in Dearborn County may obtain supplies from Creation Station. This includes, but is not limited to: classroom teachers, 4-H leaders, Scout leaders, homeschool parents, non-traditional educators, and VBS teachers. Anyone who wants to use materials from Creation Station must provide proof of not-for-profit status and demonstrate intent.

COSTUME SWAP

Costume Swap is an annual event that offers customers the chance to share and rewear costumes that would otherwise only be worn once. Anyone can participate by bringing a costume and selecting another.

HOLIDAY GIVEAWAY

The Holiday Giveaway is an event where anyone can come and receive free holiday decorations, ornaments, gift wrap, Christmas trees, and craft supplies.



EDUCATION & OUTREACH PROGRAMS

2025 PROGRAM SESSIONS

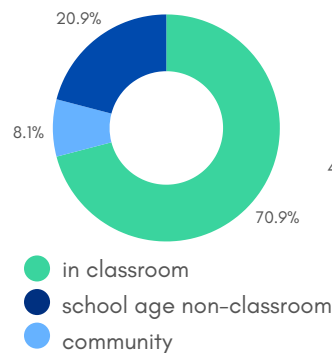
PROGRAM	SESSIONS
Paper Recycling	51
Worm Composting	50
Edible Landfill	20
Freddy the Fish	17
Litter Bugs	8
The 3Rs	7
Enviro-Jeopardy	1
DCRC Tour	1

2025 OUTREACH EVENTS

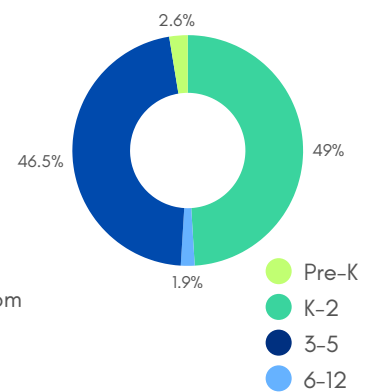
EVENT
DCRC Presentations with local groups
CASA Youth Summit
Joint event with the DC Health Dept. at Hollywood Casino
DCRC Facility Tours
Mobile Electronics Collection
Dearborn County 4-H Fair
Smart Start Event at the Health Dept.
Partnership with DC 4-H Leaders
PAWS Halloween Festival
Halloween Sensation
Holiday Recycling Programs for Adults



2025 SESSIONS



YOUTH PROGRAMS BY GRADE LEVEL



EDUCATION AND OUTREACH

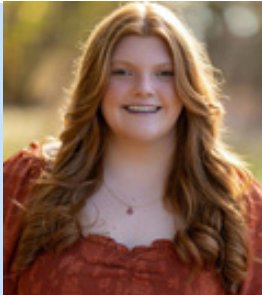
The DCRC offers free environmental education programs available for schools, youth, and other community organizations upon request. The programs cover topics such as recycling, composting, landfills, and litter prevention. Facility tours are available for ages 10 and up and must be scheduled during normal business hours. The DCRC also participates in community events to share recycling information. The booth provides games and giveaways as a great way to help share information about recycling and DCRC services with the community.

EARTH DAY CONTEST

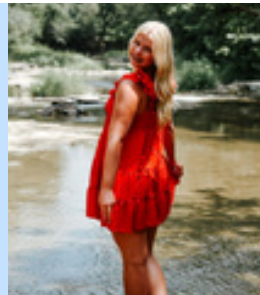
In April, the DCRC celebrated Earth Day by sponsoring a Chalk the Walk Earth Day Contest for students. The DCRC offered free sidewalk chalk to those teachers who wished to participate, and all entries had to be submitted as a group or classroom. Overall, 44 classrooms participated from 8 different schools in the county.

DCRC SCHOLARSHIP

The Dearborn County Recycling Center's Scholarship Program launched in 2025, marking its first year of offering a \$500 award to one graduating senior from each of the county's three high schools—East Central, Lawrenceburg, and South Dearborn. The scholarship supported students committed to pursuing a full-time college or university degree in environmental studies. Applicants were reviewed by representatives from the Recycling Center and the Citizens' Advisory Committee. Two winners were chosen from both Lawrenceburg High School and South Dearborn High School.



ELIZABETH THEOBALD
Lawrenceburg High School



SOPHIA FERGUSON
South Dearborn High School

Elizabeth is attending Purdue University in the Fall of 2025, where she plans to pursue a B.S. in Environmental Science and an M.S. in Environmental Geoscience and Hydrology. She hopes to work towards studying the adverse effects of climate change and pollution on our planet's water systems. Besides being an advocate for the environment and recycling, Elizabeth is also a current volunteer with the Archeological Research Institute in Lawrenceburg.

Sophia is attending Indiana University's Indianapolis campus starting in the fall of 2025, where she plans to pursue a B.S. in Biology. She hopes to explore the complex dynamics of ecosystems and the relationships within them. Sophia was involved in many leadership clubs at South Dearborn, as well as volunteering with events such as the Ohio Clean River Sweep.



CITIZENS ADVISORY COMMITTEE (CAC)

The CAC was formed to collect public input and present it to the Dearborn County Solid Waste Management District Board. The committee gives input to recycling initiatives throughout the county, as well as volunteers with the DCRC's reuse programs and events.

Mary Bailey
Deb Crosby
David Dobbs
Linda Johnson
Nancy Lillie

Janet Luebbe
Michelle Murray
Debbie South
Alan Weiss



THE PEOPLE OF DCSWMD

2025 PERSONNEL

Director	Adam Clark (8/4/2025- present) David Hogg (1/1/2025-7/18/2025)
Educator/Outreach Coordinator	Stefanie Hoffmeier
Reuse Coordinator/Office Assistant	Julie Robinson
Operations Manager	David Craig
Assistant Operations Manager	Randy Stenger
Residential Trailer Driver	Mike Eliason Mike Teaney
Commercial/School Collection	Ross Cutter Randy Bath Terry Black
Forklift Operator	Don Shelton
Driver/HHW Back-up	Randy Robinson
Drive Thru Attendants	Clinton Burlage Joe Grote Jeff Keller Vince Moore
Processing	Elmer Campbell Steve Black Joe Dittmer Ken Mosmeier Dick Gordon



EXECUTIVE BOARD

Duane Bischoff	County Commissioner, Board President	<i>Term: 1/1/2025-12/31/2028</i>
Tim Doll	Representative, County Council	<i>Term: 1/1/2025-12/31/2025</i>
Vince Karstetter	Mayor of Greendale	<i>Term: 1/1/2024 - 12/31/2027</i>
Bryan Messmore	City Coordinator, Lawrenceburg	<i>Term: 1/1/2024 - 12/31/2027</i>
Kelly Mollaun	Mayor of Lawrenceburg	<i>Term: 1/1/2024 - 12/31/2027</i>
Jim Thatcher	County Commissioner	<i>Term: 1/1/2025-12/31/2028</i>
Kevin Turner	County Commissioner	<i>Term: 1/28/2025 to 12/31/2026</i>
Doug Garner	Pillar Law Group, Board Attorney	



dearborncountyrecycles.com

10700 Prospect Ln. | Aurora, IN 47001 | 812.926.9963

